

**> 70100177 SECURITY**  
SURFACE MOUNT PROXIMITY READER / LED



**C.E. Electronics, Inc.**

Bryan, OH, USA

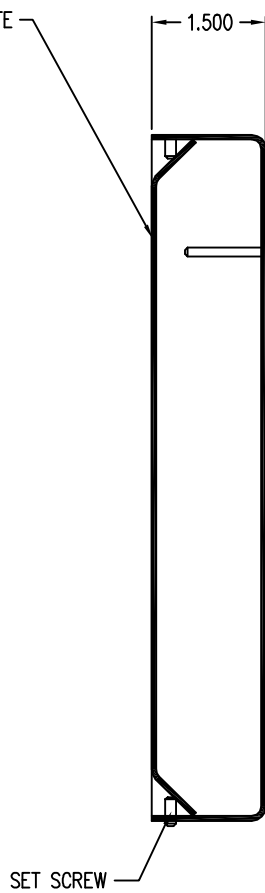
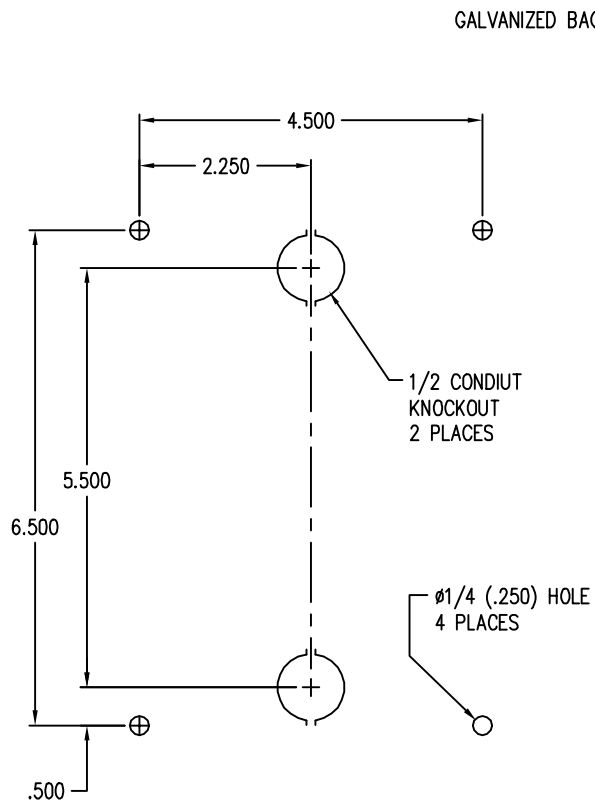
Ph: (419) 636-6705

[www.ceelectronics.com/security](http://www.ceelectronics.com/security)

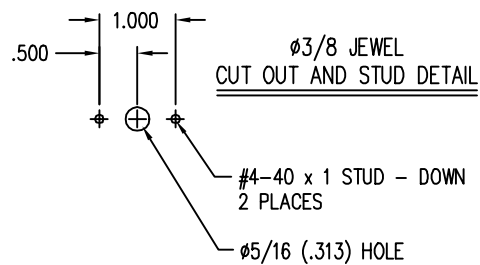
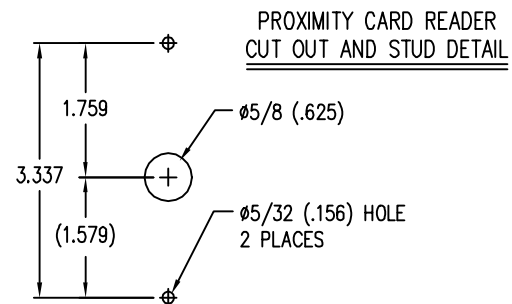
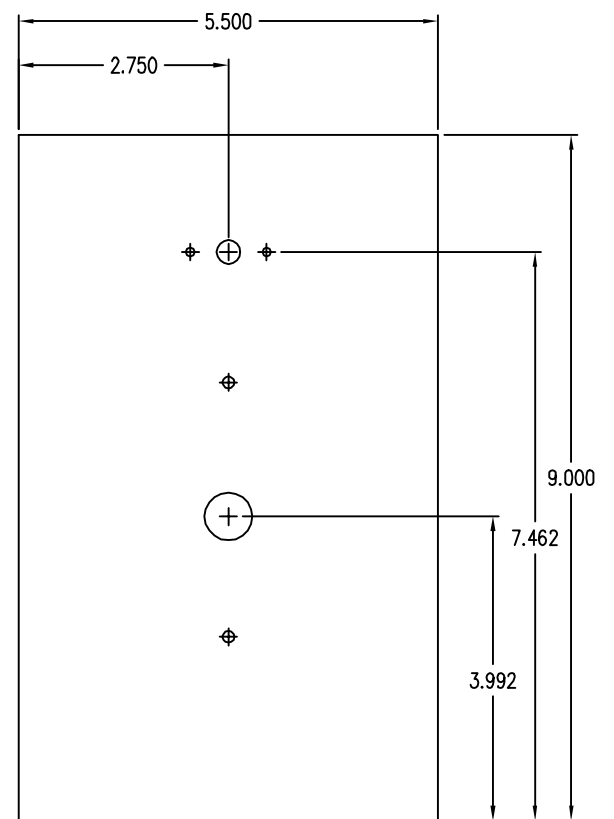
Marlow, Bucks, UK

**C.E. Electronics Ltd.**

Ph: +44 (0) 1628 487633



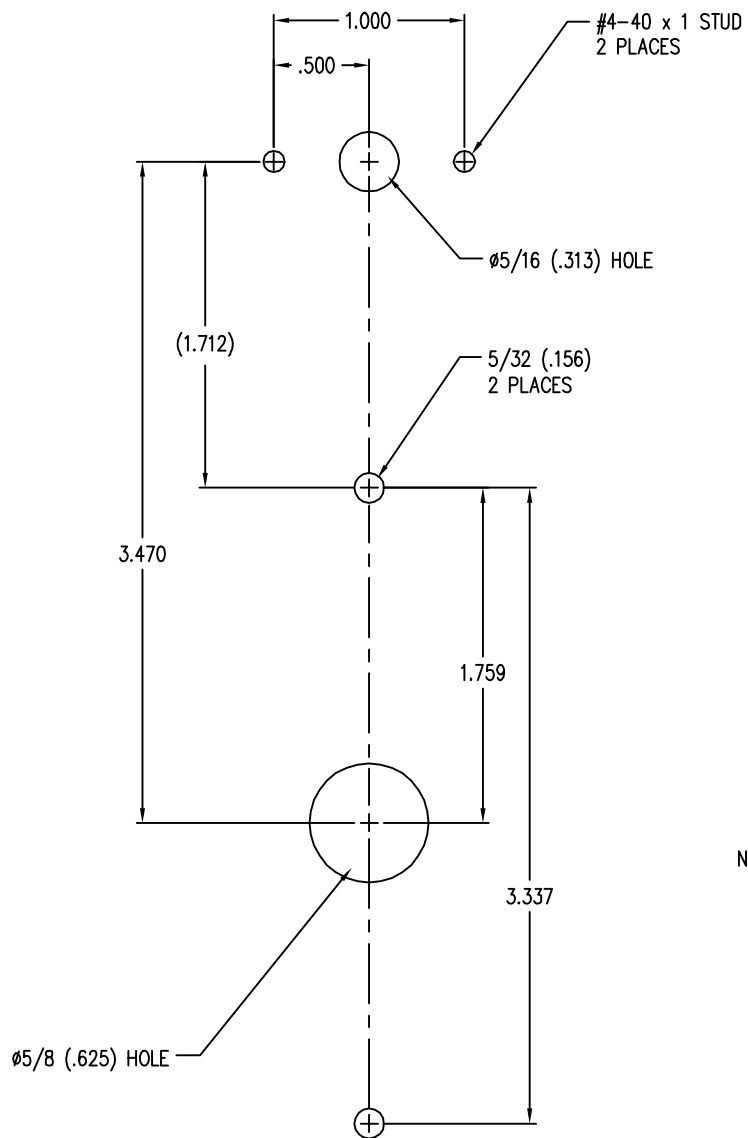
FINISH



MATERIAL: 16 GA (.06) STAINLESS STEEL  
 FINISH: #4 BRUSHED - VERTICAL GRAIN  
 NOTE: GALVANIZED BACK PLATE INCLUDED  
 VENDOR TO SUPPLY AND INSTALL "WHITE" JEWEL w/ RETAINING CLIP

LENS NUMBER:	BOARD # & REV:
APPROVED BY:	
Signature:	
Date:	
Company:	


DATE DRAWN: 8/7/2017	LAST DATE REVISED:	SCALE NTS	PART #:
DRAWN BY: RNT	TOLERANCE UNLESS OTHERWISE SPECIFIED: ±.010	 C.E. ELECTRONICS, INC. 2107 Industrial Drive Bryan, Ohio 43506 (419) 636-6705	
REQUESTED BY:	TOLERANCE FOR CUTOFF (WINDOW):		
TITLE: SURFACE MOUNT PROX READER		DWG. NO. 70100177	REV:



SHORT PROX READER  
CUT OUT and STUD DETAIL

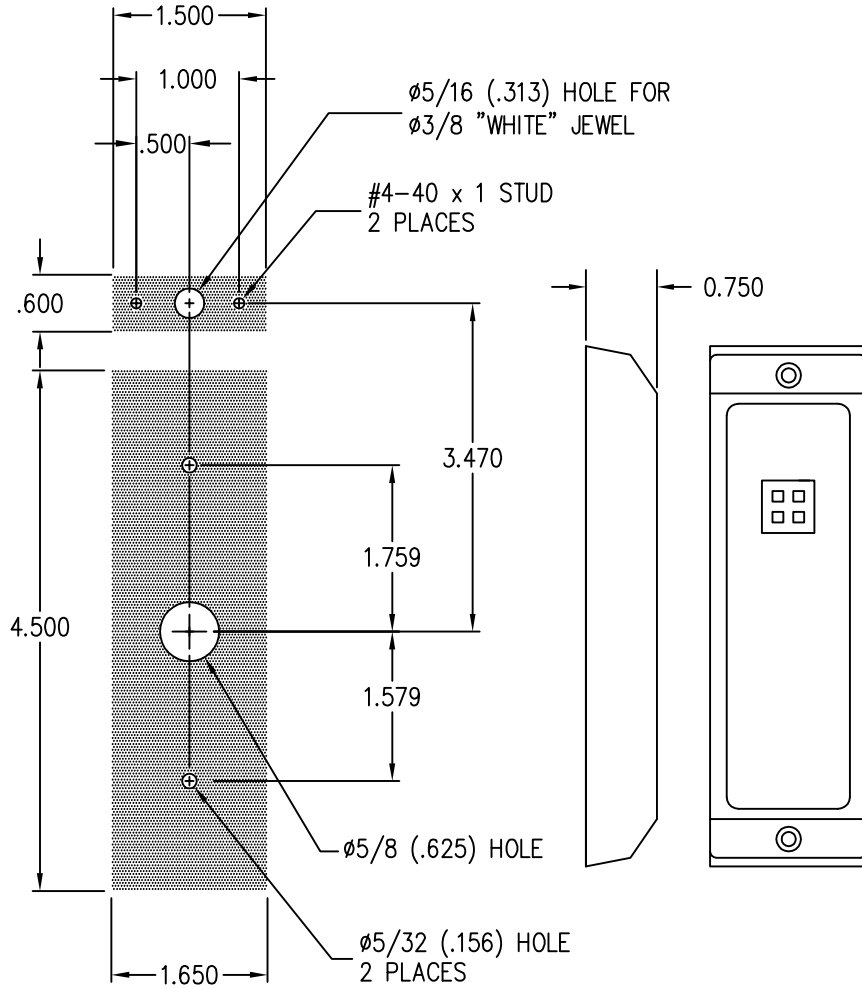
NOTE: SES PROXIMITY CARD READER; CE # 70400007

LENS NUMBER:	BOARD # & REV:
APPROVED BY:	
Signature:	
Date:	
Company:	

DATE DRAWN: 8/18/2017	LAST DATE REVISED: -	SCALE NTS	PART #
DRAWN BY: RNT	TOLERANCE UNLESS OTHERWISE SPECIFIED: ±.010		 <b>C.E. ELECTRONICS, INC.</b> 2107 Industrial Drive Bryan, Ohio 43506 (419) 636-6705
REQUESTED BY:	TOLERANCE FOR CUTOUT (WINDOW):		
TITLE: SHORT PROX READER - PANEL PREP			DWG. NO. 70400007-PP



## DETAILS for PROXIMITY READER



## DETAIL for SWIPE READER

