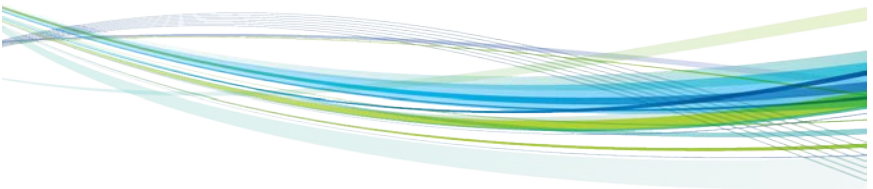


# Elite PI

Transfer v2 Quick Start Guide



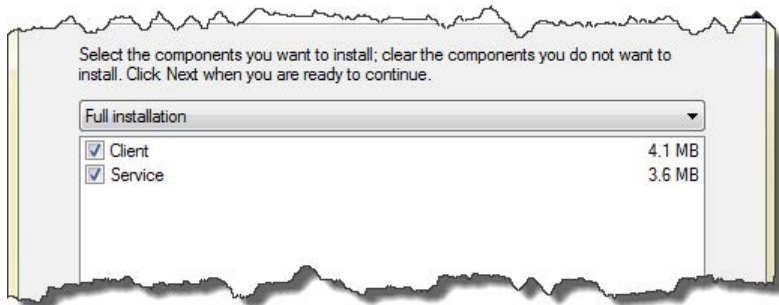


# Elite PI

## Transfer v2 Quick Start Guide

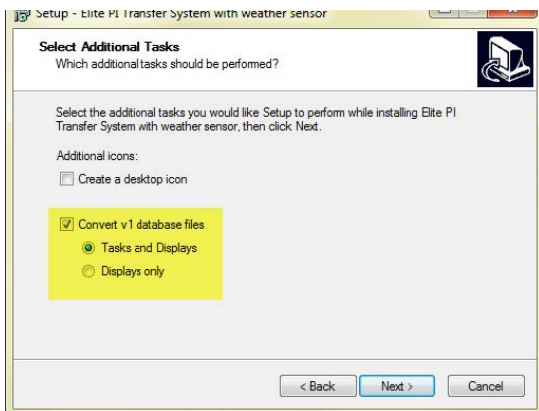
---

1. Run the Elite PI Transfer v2 installer.



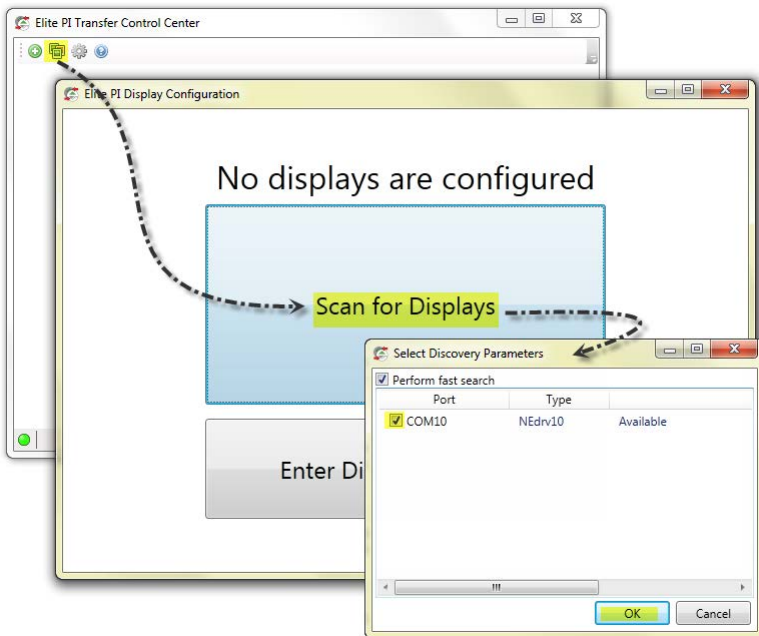
2. The Transfer v2 has two components, a service and a client. The service should only be installed on one computer since it manages the communication with displays. The client can be installed on multiple machines and is used for managing and monitoring the service. When the client is first installed, it will have a service setting of localhost.

3. If Elite PI Transfer v1.x.x, or Elite PI Multi-Transfer v1.x.x is installed, you may be prompted to import Tasks and Displays. It is generally good to select **Convert v1 database files** and then **Tasks and Displays**.

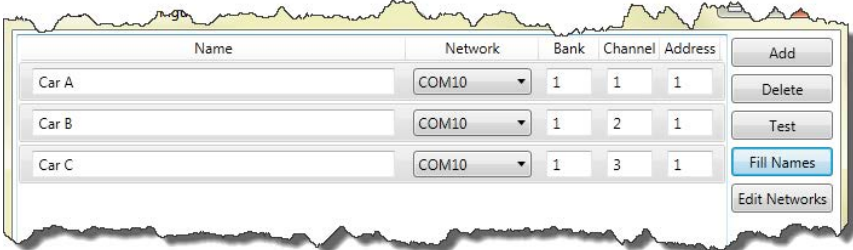
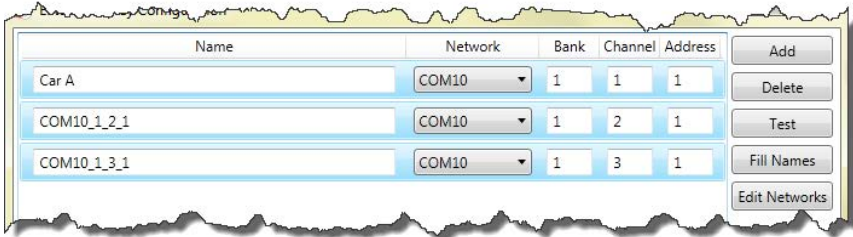
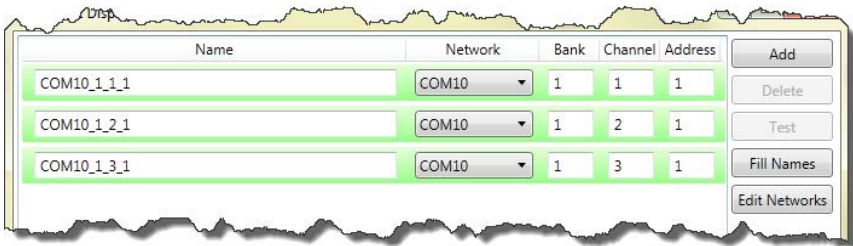


4. If an earlier version of the transfer is not currently installed or no data is available for importing, continue installed or no data is available for importing, continue the installation and the process will complete with no tasks or displays configured. **Note:** Before configuring the Transfer v2 application, the COM ports must be configured for the system. This is usually done using the Network Enabler Administrator software.

5. From the toolbar, select **Edit Display**, then **Scan for Displays**. Select the COM ports that will be used and press **OK**. The software will then conduct a broadcast search for displays on all of the selected COM ports. If no displays are found, check the connections from the bank board (ELBNK, ELESC) using the built-in testing function for those products.

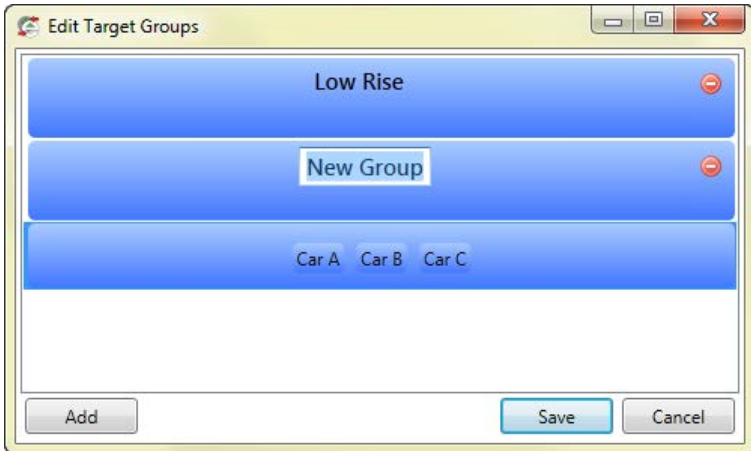


6. Once the discovery is complete, the list of found displays will appear and their names will be an auto-generated string in the format `COM_Bank_Channel_Address`. They can be renamed by editing the Name field.



7. The **Fill Names** feature allows one to modify the first display in the group (Elevator 1, Lift A, Car 23, Passenger 12, Staff B, etc.), then select the other cars in the group and press **Fill Names** to increment the letter or number for the selected cars.

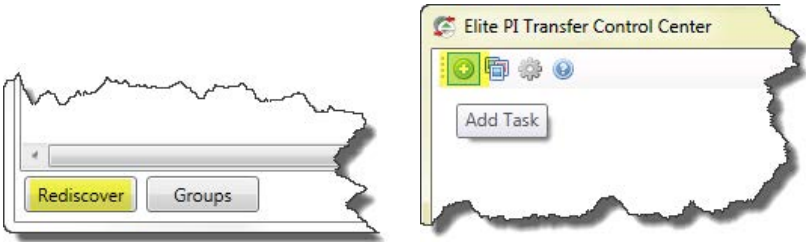
8. It is also possible to make logical groups of cars using the **Groups** feature. This allows for easy selection of banks or other logical groups, as well as a way to visually see the status of cars as a group. Displays can be added to create groups by dragging with a mouse.



9. If not all displays are installed/connected, it is possible to search for them later using the **Rediscover** feature.

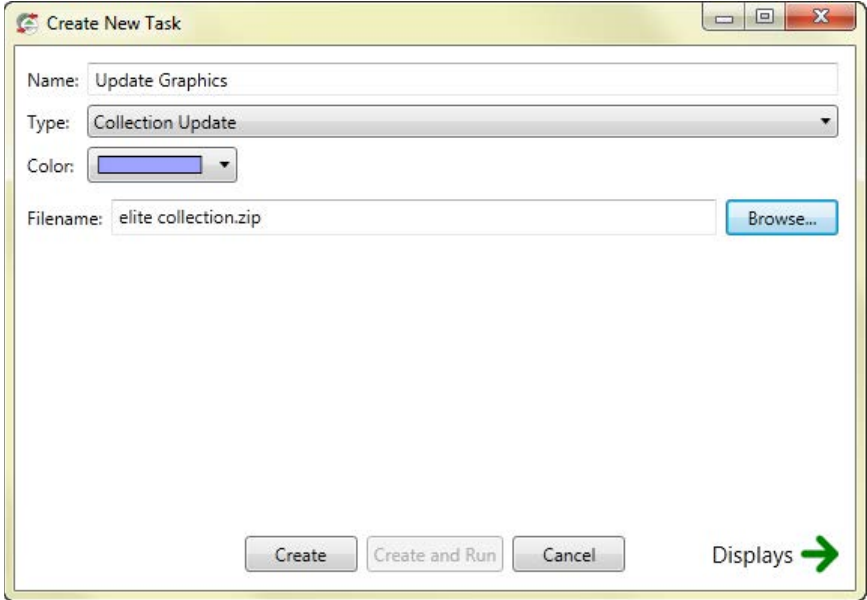
10. When finishing adding displays, press **Save** to return the main screen of the Elite Transfer client.

11. It is now possible to add tasks. Tasks are used to perform graphic updates as well as sending data to a display or group of displays. It is common to have two tasks but more may be necessary for isolating groups of displays that have different content or for advance features like sending XML data to displays.



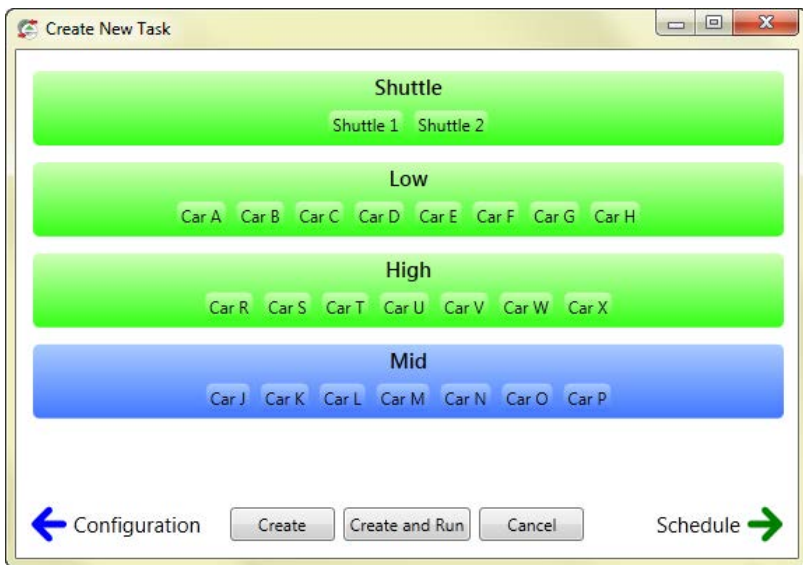
12. To create a new task, press the Add Task button located on the toolbar.

13. Name the task, select **Collection Update** from the **Type** field and then press the **Browse** button to select the collection created with the Elite PI Designer application. Next press the **Displays** button in the lower right corner to go to the next screen.



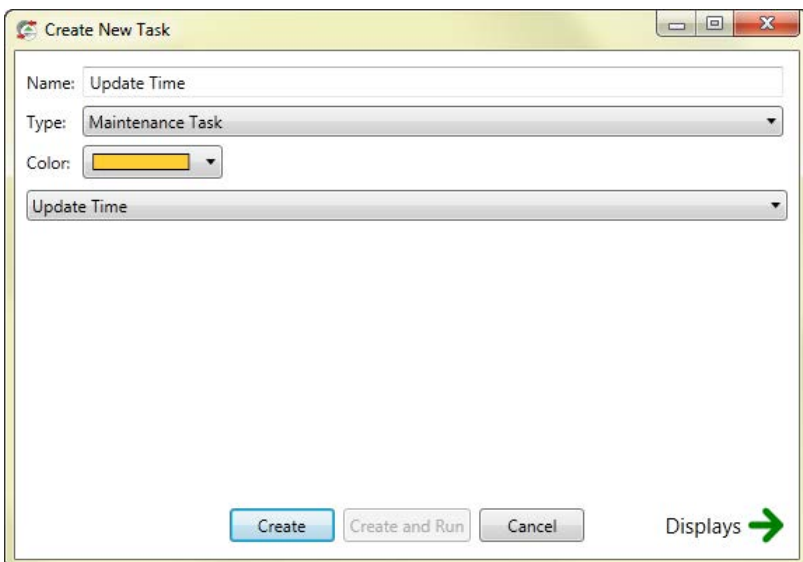
14. Select the display(s) that should receive this update. Displays can be selected individually or as a group. Green displays are included and blue displays are excluded.

15. Press **Create and Run** to send the collection to the selected display(s).



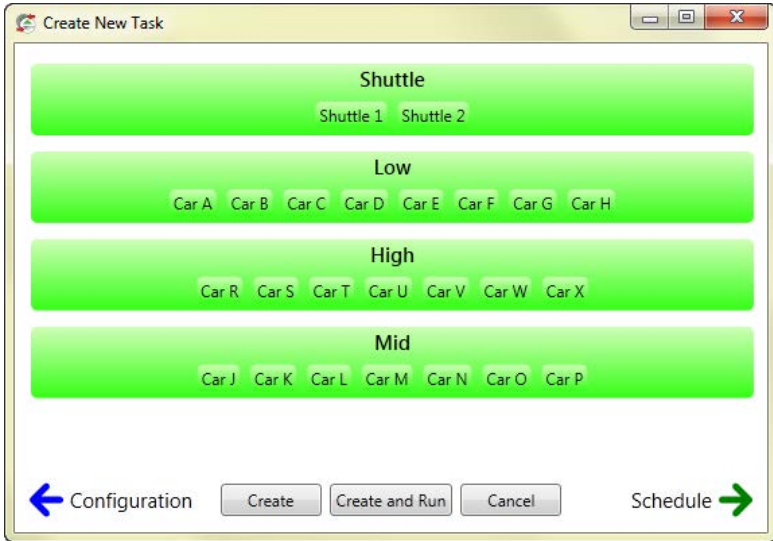
16. Press the **Add Task** button again to create a new task.

17. Name the task, select **Maintenance Task** from the **Type** field. Select **Update Time** from the second drop-down. This task will be setup to update the time on the displays each day. Next press the Displays button in the lower right corner to go to the next screen.

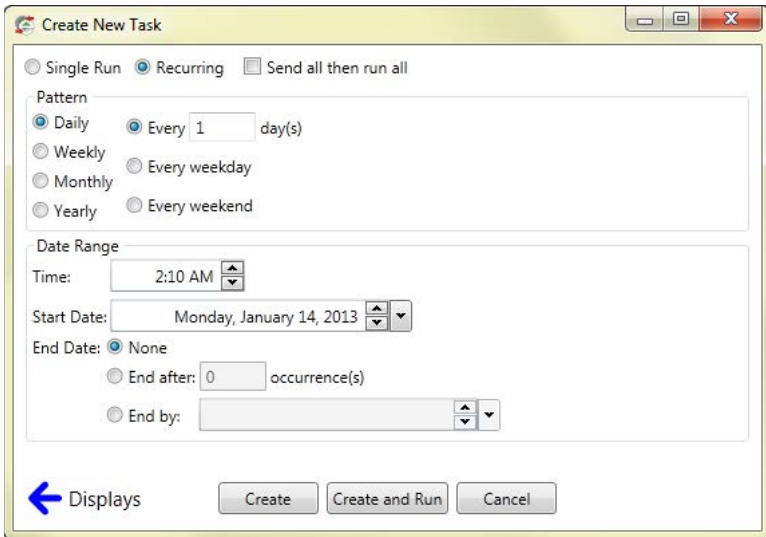




18. Select the desired displays and press the Schedule button from the lower right corner.



19. Change the run type to Recurring, Daily at 2:10 am with no end date.



20. Press **Create and Run** to send the collection to the selected display(s).

21. When a task is running, blue displays indicated that it is in the queue, yellow is in process and green is complete. If there is a problem communicating to a display, it will appear red.







**CE Electronics Inc.**  
2107 Industrial Drive  
Bryan, Ohio 43506  
[www.ceelectronics.com](http://www.ceelectronics.com)