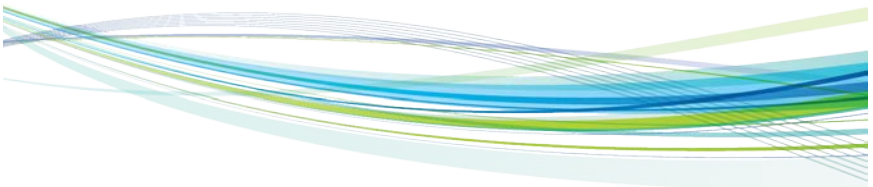


Elite PI

Transfer Program: User Manual



Version 1.5

Elite PI

Transfer Program: User Manual

1.0 INTRODUCTION	3
1.1 Getting Started	3
1.2 Installation	3
2.0 CREATING AND EDITING A TASK	4
2.1 Defining your Networks	5
2.2 Define your Displays	7
2.3 Add a New Task	8
2.4 Editing a Task	10
2.5 Deleting a Task	10
2.6 Setting the Time/Date	10
3.0 MONITORING THE TRANSFER	11

1.0 INTRODUCTION

The Elite PI Transfer program is used to manage layouts created with Elite PI Designer. With this tool, you can take the displays you have designed and put them to work with your networks and elevator banks. You may use one or multiple layouts in your elevators, and schedule the transfer process to happen at a time which is convenient for you.

1.1 Getting Started

Minimum System Requirements:

- Microsoft Windows © 95 or Microsoft Windows NT © Workstation
- Pentium 100 MHz processor
- 16 MB memory for Windows
- 20 MB available hard drive space
- 800 x 600 point resolution and 16-bit color (800 x 600 or higher desktop area (video resolution) and High Color (16 bit or better) video mode).

1.2 Installation

1. Place the Elite PI ELD CD in the CD-ROM drive.
2. The program will automatically start up install after you have inserted the CD.
3. If the setup program does not automatically start, go to the Start bar and select Run. Type in the drive letter of the installation disk, and the file name "setup.exe". For example, if the CD is in the d: drive, type d:**setup.exe** and select OK. This will begin the installation process.
4. First you will be presented with the screen giving you the option to install various applications. Select the Elite PI Designer option then the Installation Wizard will guide you through the installation process. The installation process will create an Elite PI application folder under your Programs of your Start Bar and a program ICON on your desktop. To start the application, simply click the icon named Elite PI ELD Designer.

2.0 CREATING AND EDITING A TASK

The Elite PI Transfer Program allows you to take the Elite PI Layout previously designed and

- Define the networks which communicate information about your elevators to the displays
- Define each display which will be in place
- Set up tasks to match layouts you have designed with your elevator displays

When you first open Elite PI Transfer Program, you will be at the main screen (see figure 1). This screen may be blank, with no tasks defined, or there may be a sample layout set up for your system. We will take you through the elements of setting up your transfer: defining your networks, defining your displays, defining tasks, and attaching your layout. Before we begin, we will define the terms being used in the manual.

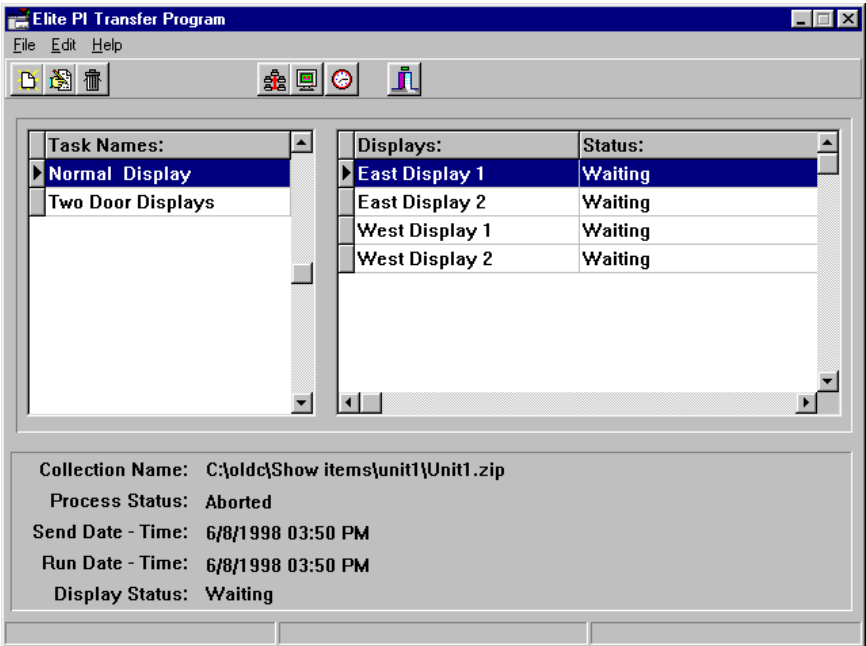


Figure 1

Task: A task is a logical grouping of all the displays which will be receiving the same data. In addition, a display may be used in more than one task. While you can define more than one task per layout, you may only list one layout per task. For example, if you have designed two Elite PI Layouts, perhaps one layout for garage elevators and an additional layout for main building elevators, you will need to define two tasks.

Network: For our purposes, a network is defined as the feed coming from the main computer. A hub is an external board you may purchase which is used to branch one serial port from the PC to 8 cables. This board is called a network board because it can be used as a bank board or a network board depending on switch settings on the board. You can also think of the network board as a computer control switch (1 to 8) with a built in converter. Different networks are necessary due to cable limits. The RS232, coming out of the computer, has a limit of 50 ft. This can be converted to an RS485, which has a limit of 4000 feet of cable. The cabling needs to be run from point to point, so if the bank boards are in two different buildings, then the cable would be run from Computer to Bank 1 then from Bank 1 to Bank 2 and still be under 4000 ft. The hub board allows one cable to be run from the hub to bank 1 and another cable from the hub to Bank 2 with each cable being limited to 4000 ft. In addition, a separate network is used for each phone number that is dialed by the modem.

Display: The term display is used to refer to each separate elevator display. You must define each display separately in order to transfer data to it.

2.1 Define your Networks



Before you begin to define your tasks, you must first identify where your networks are, and define them to the Elite PI Transfer program. To do this, from the main window, select "Edit", Version 1.5 Rev 3 07/29/98 12:28 PM "Networks", or select the fourth button on the toolbar, with the picture of multiple computers. This will bring up the Edit Networks screen (figure 2).

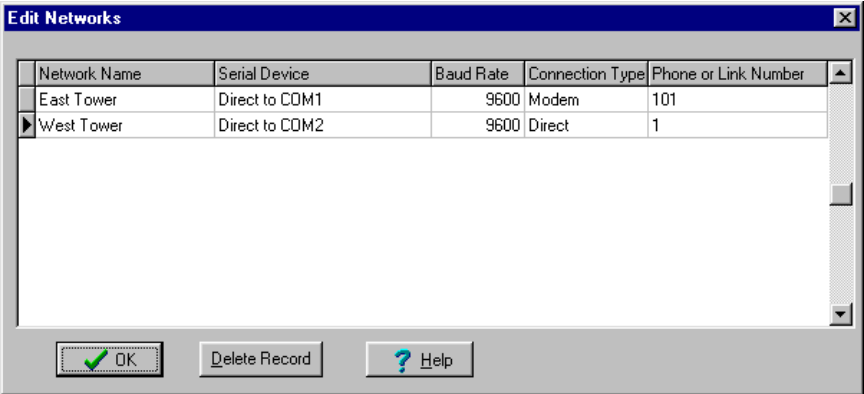


Figure 2

There are five pieces of information you must enter for each network. If you have finished defining a network, and wish to define a new network, simply press the “Tab” key to create a new line on the network table.

Network Name: Type in the name you will use for the network. Your name must be twenty characters or less, and can contain both letters and numbers. This should be a name which will be easy for you to identify. For a building with a feed to both garage elevators and to a main building, we would set up two networks, “Garage” and “Main Building”.

Serial Device: Select the serial device which is attached to that network. All installed com ports and modems will be listed as available.

Baud Rate: Select the appropriate baud rate for the network. The current available options are 9600 baud and 19200 baud. Please note that the baud rate **must** match the settings of the Bank cards, Hub, Modem, and Displays on this network. Their baud rate is controlled by dip switch settings on each unit.

Connection Type: Select the appropriate connection type. Direct is a connection from the PC serial port through a RS232 to RS485 converter to one or more displays. Hub is a connection from the PC serial port to a network board configured as a hub board. Connections from the hub board go to Bank boards or to displays. Modem is a connection from the PC Serial port to a modem. The modem is used to dial another modem connecting to Banks and Displays.

Phone or Link Number: Select the appropriate link number. For hub connections, this number must be from 1 to 8 as it is used to tell the hub board which connection is to be used. For a direct connection this number is not used and is ignored. For modem connections, this will be the phone number the modem must dial into. You may use dashes in defining the phone number.

If you wish to delete a network, place your cursor on the row and press the “Delete Record” button. You will be asked to confirm the delete. If you still wish to delete the item, select yes. When you have finished entering information, click the OK button, or close the window using the X in the upper-right hand corner of the window.

2.2 Define your Displays

Now that your networks are defined, you will next define your displays. To do this, from the main window, select either “Edit”, “Displays”, or select the fifth button on the toolbar, with the picture of a single monitor. This will bring up the Edit Displays screen (figure 3). You will want to create a display for every elevator with an Elite PI display. If you have finished defining a display, and wish to define a new one, simply press the “Tab” key to create a new line on the table.

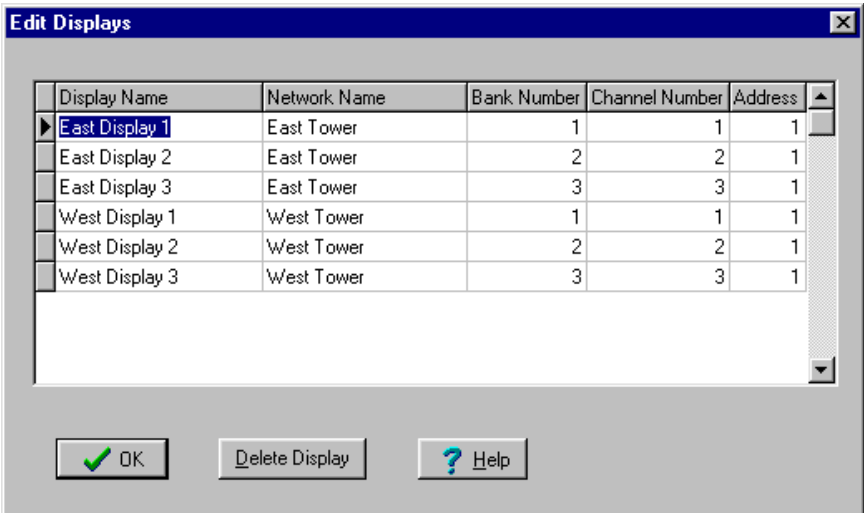


Figure 3

There are five items to be defined for each display:

Display Name: Type in the name you wish to use for the display. Your name must be twenty characters or less, and can contain both letters and numbers. Again, this should be a name which will be easy for you to identify. For a bank of three elevators to the garage, the names could be “Garage Display 1”, “Garage Display 2”, and “Garage Display 3”.

Network Name: Select the appropriate network from the networks previously entered.

Bank Number: Enter the appropriate bank number to which the display is connected. Please note that Bank 0 has a special meaning, and is used when there is no bank card. The bank number need to match the address switches on the Bank board. The bank cards are address so multiple bank cards can be chained together.

Channel Number: Enter the appropriate channel number to identify the display. This will identify which elevator within the bank you are referring to.

Address: Enter the appropriate address to identify the display. This will define which display you are identifying within the channel.

If you wish to delete a display, place your cursor on the row and press the “Delete Record” button. You will be asked to confirm the delete. If you still wish to delete the item, select yes. When you have finished entering information, click the OK button, or close the window using the X in the upper-right hand corner of the window.

2.3 Add a New Task



Now that your networks and displays are defined, you can add a new task. To do this, select “File”, “New Task”, or click the left-most button on the toolbar. The Edit Task screen will appear (figure 4). Name your task at the top of the screen, in the Task Name field. The next field to fill in is the Collection Name field. To do this hit the button to the right and browse to select the file and path. Send Date and Run Date will be automatically filled in to be the date you are creating the task, as well as Send Time and

Run Time. Send Date defines when the new layout will be sent to your displays. The layout will be sent to each display in order, and may take some time to complete for each display. After the information has been sent, it will not be operational until it is has been "run." Run Date will define the time, after the information has been sent, when the displays will be using the new layouts.

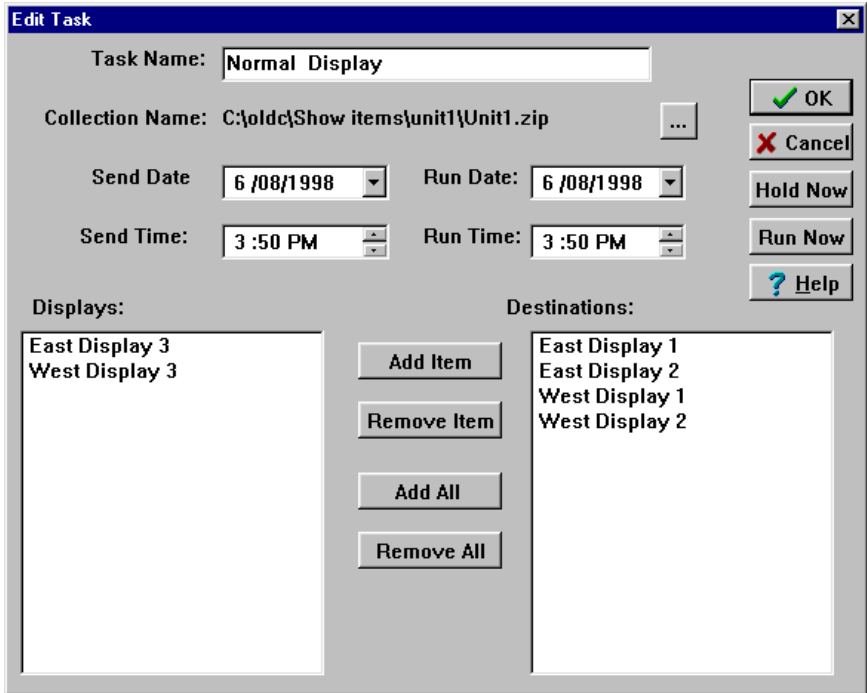


Figure 4

The bottom of the screen lists the available displays on the left. Select the displays to be defined by this task, and using the buttons to the right of the box, add items to the Destination box. You may either select one display at a time, or add all displays. If you add a display to the destination accidentally, you may remove the item using the Remove Item button.

At the right side of the screen are several buttons. The OK button will save your changes and exit. The Cancel button will not save your changes, and exit. The Hold Now button allows you to exit without defining a Send Date and a Run Date, when you are not yet sure of when you want to transfer the layout. The Run Now button will set a small delay and the run the transfer immediately.

2.4 Editing a Task

If you wish to edit a task you have previously defined, select “File”, “Edit Task”, or select the second button on the toolbar. You may also use the right mouse button and double click on the task name. Any of these actions will bring up the Edit Task screen. Make changes to the task, and select OK.

2.5 Deleting a Task

If you wish to delete a task you have previously defined, select “File”, “Delete Task”, or select the third button on the toolbar, with the picture of a trash can. You will be asked to confirm the deletion.

2.6 Setting the Time/Date

Another task accomplished with the Elite PI Transfer program is to set the time and date to be displayed in the elevator. To do this, select “Edit”, “Time Date”, or select the sixth button on the toolbar, with the picture of a clock . This will bring up the Edit Time Date screen (figure 5). The defined banks will display on this screen, as the time is set separately for each bank. To set the time and date, select a bank, and choose the date and time using the time scroll box and the date drop down box on the bottom of the page. Hit the transfer button, and the date and time you set will be transferred to the display.

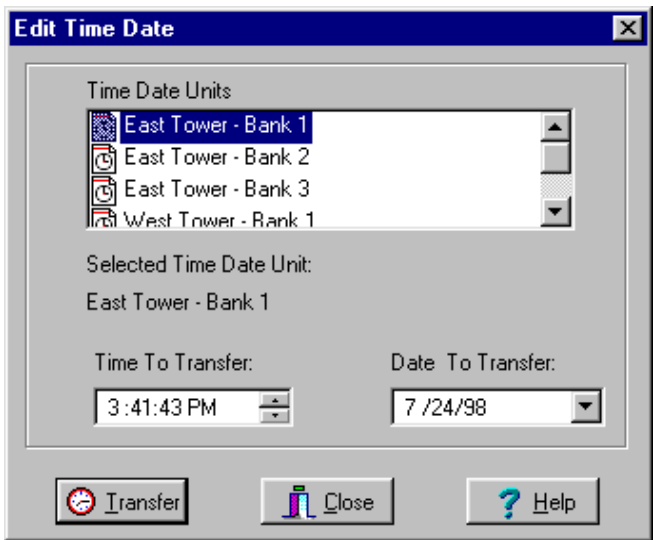


Figure 5

3.0 CREATING AND EDITING A TASK

Once you have established your networks, displays, and tasks, you can monitor the status of your transfer using the main screen. Select a task by clicking on one of the tasks in the left-hand box. The bottom of the screen will provide information about that task, such as the layout being used, the send and run date for the task, and the process status and display status.

The process status will be either Waiting, Holding, Sending, Completed, or an Error message. Waiting is the status when a future send date has been established, and is not yet reached. Holding will be the status when the task has been placed on hold, and no send date is defined. Sending will be the status when information is being sent, and Completed will be the message when information has been sent to all displays within the task. The status for each display can be viewed in the displays box. If for some reason the information cannot be sent, you will receive an error message, and information will appear in the displays box to further identify the error.

The display status will be either Waiting, Holding, Sending, Completed, or an Error message. These statuses are used in the same way as the statuses for the process status.



CE Electronics Inc.
2107 Industrial Drive
Bryan, Ohio 43506
www.ceelectronics.com