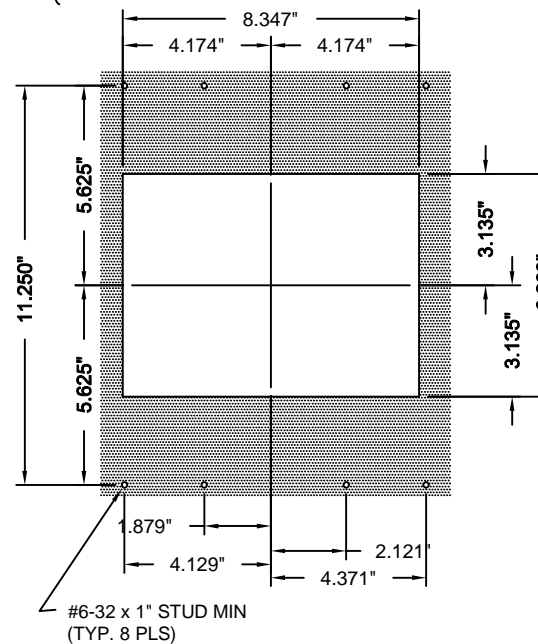
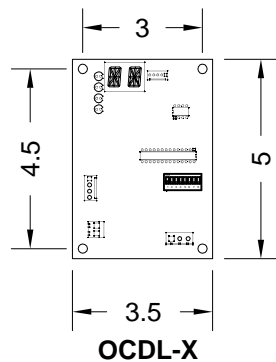
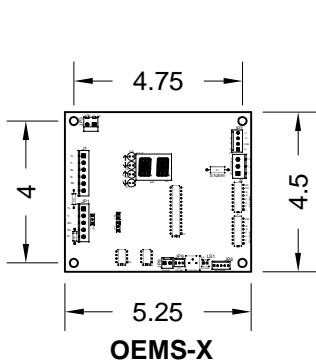


UNIT IS 2.80" DEEP.

REMOTE & AUXILIARY: 2.125" DEEP.

Additional space may be required for wiring.



FRONT VIEW

## 10.4" Narrow Luxury PI - LIQUID CRYSTAL DISPLAY (LCD)

The Otis Luxury PI is the most flexible position indicator available. With the Luxury layout software, you can customize your own position indicator by selecting background colors and textures, fonts, and arrow styles. This system is so flexible you can even determine where the display elements appear on the screen. In addition to design flexibility, the Otis Luxury PI can display floor, priority, and time-based messages.

### Typical Applications

- Car-op panel
- Transom car

### Features:

- Passing chime output
- Live video option
- Self testing
- Low profile
- Luxury designer software
- Luxury transfer software

## TO ORDER: - OX104 - B X X

### SERIES:

- "L" = MAIN
- "V" = VIDEO
- "A" = AUXILIARY PANEL LINK

INTERFACE:  
 "O" = OC DL  
 "E" = OEMS

### TYPE:

- "M" = MAIN
- "R" = REMOTE

### DRIVER OPTIONS:

USE OEMS-X ONLY IF 411 SYSTEM IS USING THE EMS OPTION