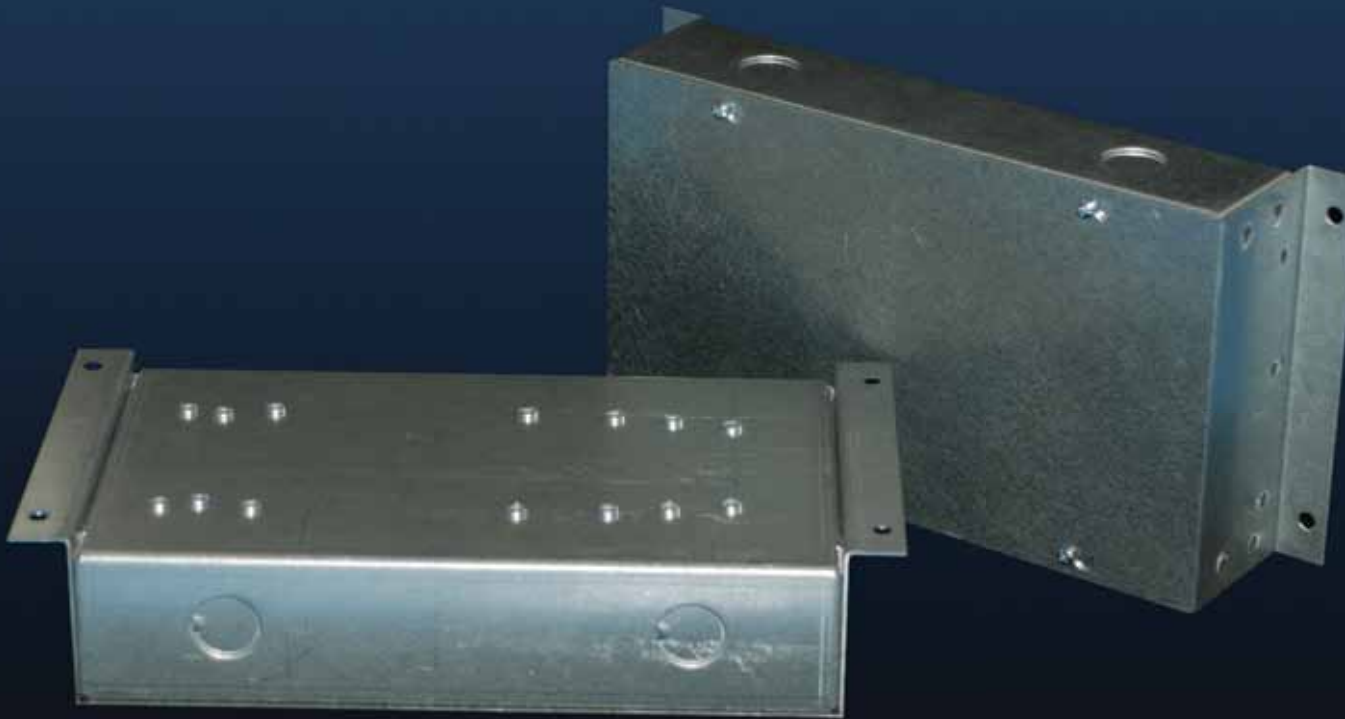


SKLITE-X ELEVATOR CAB LIGHTING



OTIS ELEVATOR CAB LIGHTING

The SKLITE cab lighting system was designed to provide an intelligent efficient LED based lighting solution for elevator cabs.

FEATURES:

- > Dimming on board circuit with 10 brightness settings.
- > External light switch input.
- > Supports up to 6 - 3Watt fixtures in 77mm and 120mm format.
- > Incorporates intelligent load software.
- > Optional remote dimming

TYPICAL:

6 lamp ceiling with 50W lamps.

300W / 1000 x 24 hours x .10 kwtt x 365 days = \$263.00

18W / 1000 x 24 hours x .10 kwtt x 365 days = \$16.00

Watts vs. BTU 1 watt is 3.41 BTU

300W x 3.41 = 1023 BTU/HR

18W x 3.41 = 62 BTU/HR

961 BTU/HR / 3.41 = 282W \$247.00

Typical Savings \$494.00 / YR

SK077 | SK120:



OTIS

Otis Elevator Company

Newberry Road

Bloomfield, CT

Ph: 860.676.6000

www.otisworldwide.com

Otis Worldwide





C.E. Electronics, Inc.
 2107 Industrial Drive
 Bryan, OH 43506
 PH (419) 636-6705 FX (419) 636-2516
www.ccelectronics.com

SKLITE-X

Ver. 4 Rel. 2/28/2012

LIGHTING

ELEVATOR CAB LIGHTING

The SKLITE cab lighting system was designed to provide an intelligent efficient LED based lighting solution for elevator cabs.

Features:

- dimming on board circuit with 10 brightness settings.
- External light switch input.
- Supports up to 6 - 3Watt fixtures in 77mm and 120mm format.
- Incorporates intelligent load software.
- Optional Remote Dimming

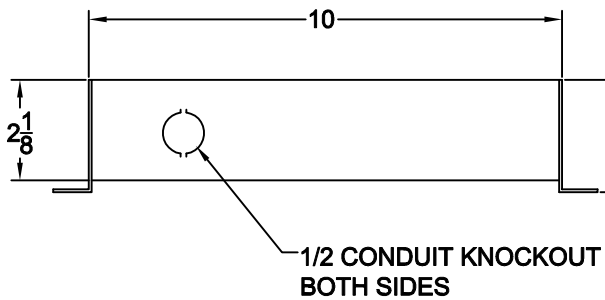
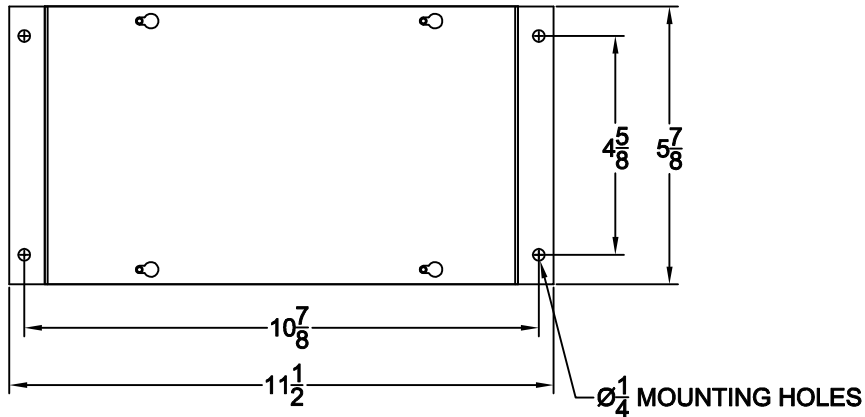


NOTE:

Drives the SK077-X or SK120-X low voltage LED lamps.

TO ORDER:-SPECIFY SKLITE - X

"R" = REMOTE DIMMER

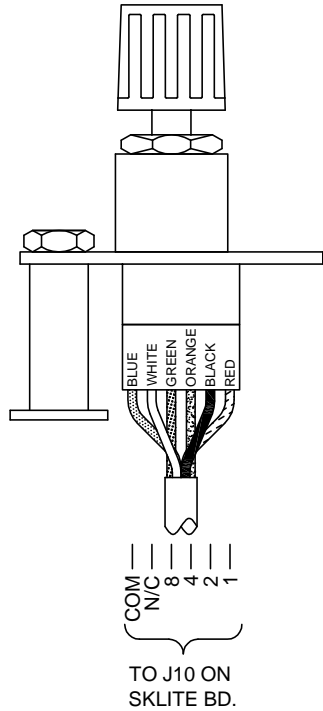


CAB LIGHTING BOARD

SKLITE - 3W, 6 LAMPS

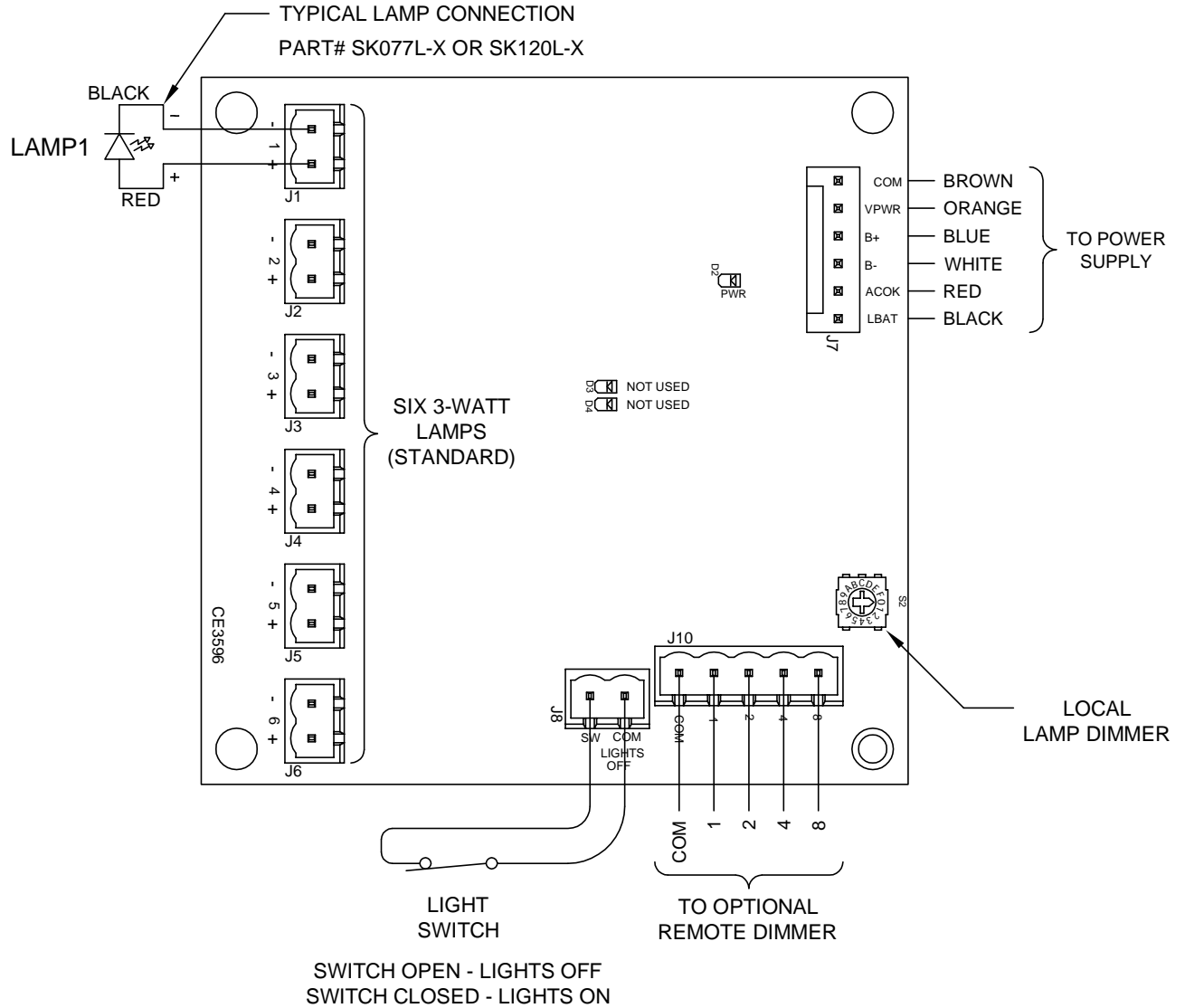
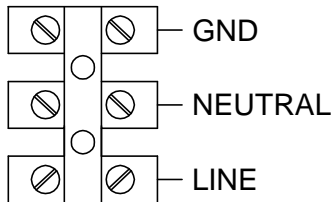
JOB# _____

SKDIM (OPTIONAL)



OPTIONAL BOARD VERSION CE2619 _____

UNIT POWER
100 - 240 VAC
50 - 60 Hz



CODE VERSION _____

BOARD VERSION CE3596 _____

DATE DRAWN: 06/07/11	DRAWN BY: DAC	REQUESTED BY: CS	 C.E. ELECTRONICS, INC. 2107 Industrial Drive Bryan, Ohio 43506 (419) 636-6705
BOARD NUMBER: 3596, 3558	LAST DATE REVISED: 08/03/11	APPROVED BY:	
PRODUCT SKLITE - 3W CAB LIGHTING BOARD			DWG. NO. SKLITE_01
			REV: B