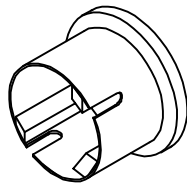


Gong dimensions: 4.15"L x 2.415"H x .910"D

SIMILAR TO 6646AWS



TYPICAL THROUGH WALL TYPE LANTERNS

LENSES NOT INCLUDED; FIXTURES NOT INCLUDED

TYPICAL USAGE: DOUBLE STROKE IS TYPICAL ON OTIS 401
 SINGLE STROKE IS TYPICAL ON OTIS 101

**OHP-X1XXX
 HOCKEY PUCK RETROFIT KIT**

This kit was designed to replace the light bulbs and mechanical bells with a solid state gong and led insert. These are designed to retrofit into the existing housing.

Features:

- Solid state
- Long life leds
- Easy installation
- Multi color

TO ORDER - SPECIFY OHP-X1XXX

SIGNAL VOLTAGE:

- "C" = 110 VAC
- "F" = -24 TO -30VDC OTIS 401
- * "S" = OTIS SERIAL RSL

ORIENTATION:

- "1" = THROUGH THE WALL

* GONG IS INTEGRAL TO SERIAL UNIT.
 YOU DO NOT NEED TO SPECIFY GONG.

DOWN COLOR CONFIGURATION

- "R" = RED LED ELEMENT
- "G" = GREEN LED ELEMENT
- "W" = WHITE LED ELEMENT
- "X" = NO DOWN COLOR

UP COLOR CONFIGURATION

- "R" = RED LED ELEMENT
- "G" = GREEN LED ELEMENT
- "W" = WHITE LED ELEMENT
- "X" = NO UP COLOR

NUMBER OF LED UNITS:

- "1" = TERMINAL (1 LED ELEMENT)
- "2" = INTERMEDIATE (2 LED ELEMENT)

MUST SPECIFY GONG ALSO: TGXXX-XFX

- "G" = 1 UP, 2 DOWN GONG

SIGNAL VOLTAGE:

- 012 = 12V AC OR DC
- 024 = 24V AC OR DC
- 120 = 48-120AC, +/-48-125DC

STROKE:

- "1" = DOUBLE IN DOWN DIRECTION
- "S" = SINGLE IN DOWN DIRECTION

POLARITY:

- "B" = AC, POSITIVE DC
- "N" = NEGATIVE DC