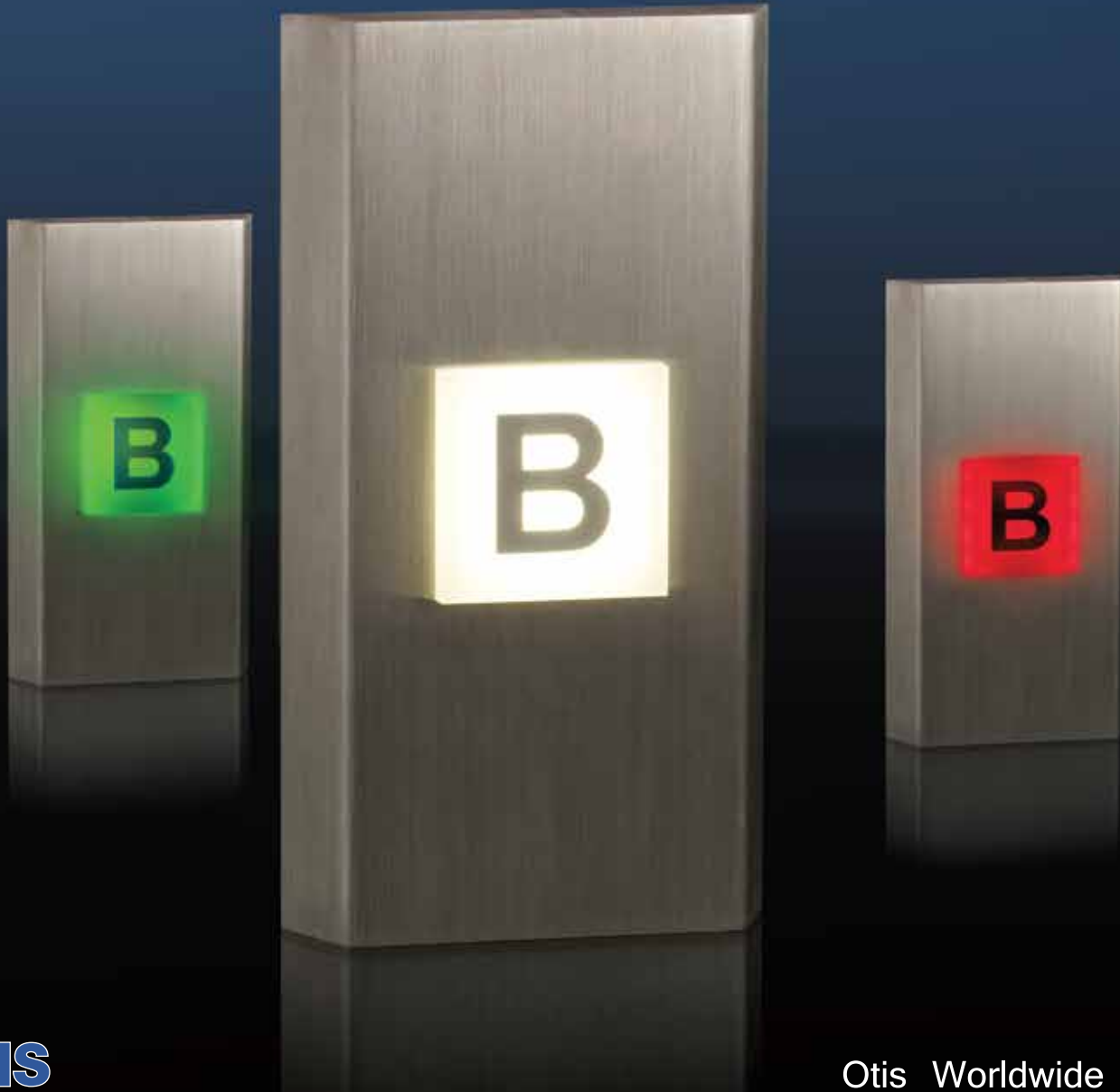




OBOX-X SURFACE MOUNT METAL



OTIS

3" LED EXTENDED DESTINATION BLOCK

Long life, solid state LED's with a 100,000 hour rated life. Accepts existing signals over the Otis RSL link. It includes white LED's when floor is available. For arrival they turn either green in the up direction or red in the down with destination characters for 180° viewing. The unit is also equipped with an arrival speaker and destination tones. The programming is dip switch selectable.

TYPICAL APPLICATIONS:

- > Destination Indicator with auto fill arrival arrows

FEATURES:

- > 2" characters
- > 180° viewing angle lantern
- > 1 year factory warranty
- > Conforms to ADAAG 4.10.4
- > Includes speaker for tones
- > OTIS RSL input
- > ECA
- > Optional Metal
- > Optional destination voice card + additional cost.
- > Note: When adding voice board, this will include our 9SPKRASY03 SPEAKER

METAL (optional):

- > 70100140 (Vertical & Horizontal)

OTIS

Otis Elevator Company

Newberry Road

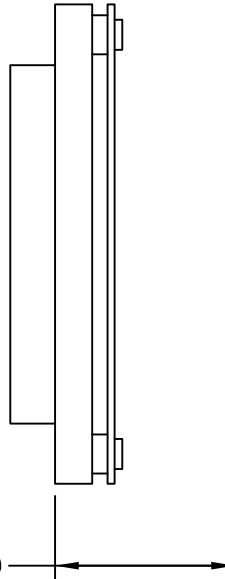
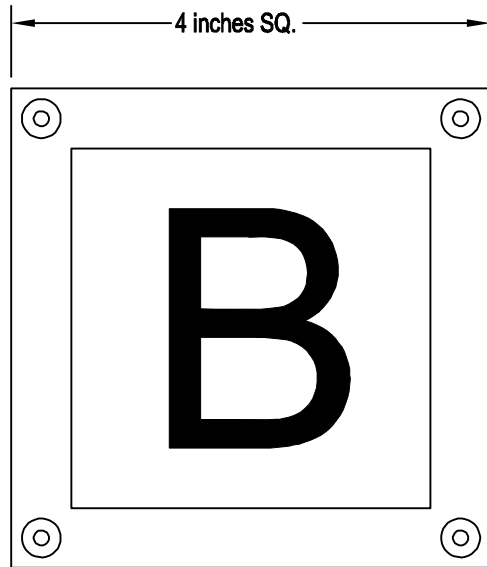
Bloomfield, CT

Ph: 860.676.6000

Otis Worldwide

www.otisworldwide.com





1-1/2 INCHES
 CLEARANCE REQUIRED
 FOR ELECTRONICS

OBOX

3 INCH LED EXTENDED DESTINATION BLOCK

Long life, solid state LED's with a 100,000 hour rated life. Accepts existing signals over the Otis RSL link. It includes white LED's when floor is available. For arrival they turn either green in the up direction or red in the down with destination characters for 180° viewing. The unit is also equipped with an arrival speaker and destination tones. The programming is dip switch selectable.

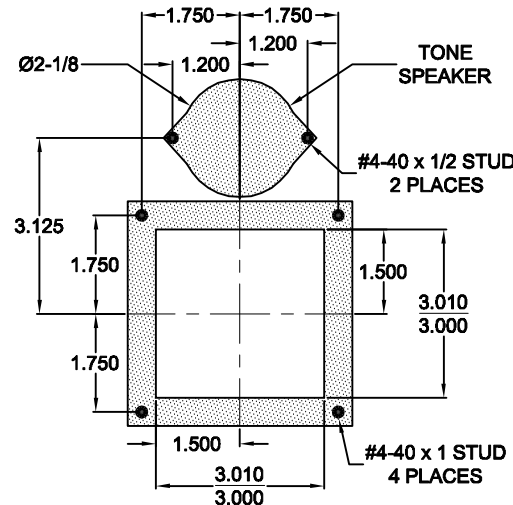
Typical Applications

- Destination Indicator with auto fill arrival arrows

Features:

- 2 inch characters
- 180° viewing angle lantern
- 1 year factory warranty
- Conforms to ADAAG 4.10.4
- Includes speaker for tones
- Otis RSL input
- ECA
- Metal - optional

- Some features may not be available for your system
- Please check with manufacturer for special features
- Consult Manufacturer for lead time



PANEL PREP

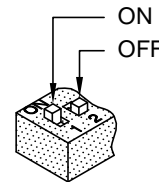
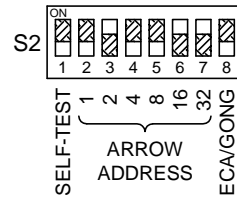
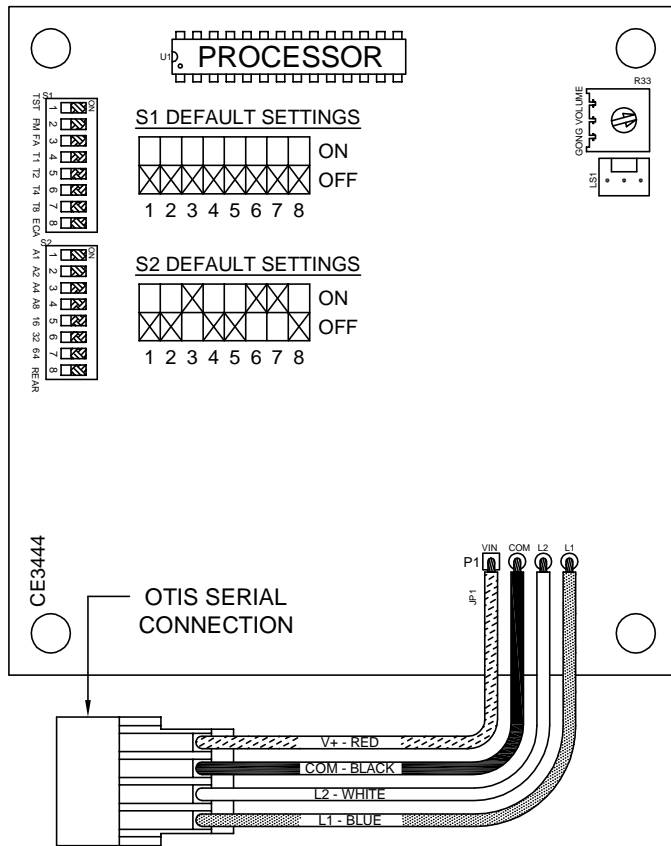
TO ORDER: - SPECIFY OBOX-X

"BLANK" = No Voice
 "D" = DESTINATION Voice
 (Adds 1/4 inch to depth)

OBOX

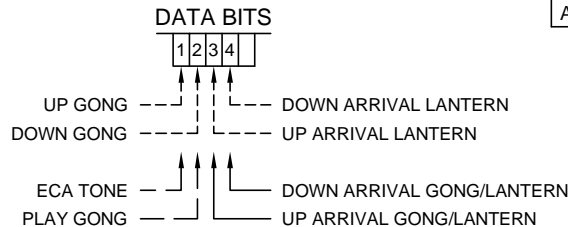
JOB# _____

CHART TO SELECT ADDRESS WITH DIP SWITCHES



ADDRESS	SWITCH VALUE							ADDRESS					
	DS1 DS2	DS2 DS3	DS3 DS4	DS4 DS5	DS5 DS6	DS6 DS7	DS1 DS2		DS2 DS3	DS3 DS4	DS4 DS5	DS5 DS6	DS6 DS7
INVALID	OFF	OFF	OFF	OFF	OFF	OFF	OFF	OFF	OFF	OFF	OFF	ON	ADDRESS 32
INVALID	OFF	OFF	OFF	OFF	OFF	OFF	ON	OFF	OFF	OFF	OFF	ON	ADDRESS 33
INVALID	OFF	OFF	OFF	OFF	OFF	OFF	OFF	ON	OFF	OFF	OFF	ON	ADDRESS 34
INVALID	OFF	OFF	OFF	OFF	OFF	OFF	OFF	ON	ON	OFF	OFF	ON	ADDRESS 35
ADDRESS 4	OFF	OFF	ON	OFF	OFF	OFF	OFF	OFF	OFF	ON	OFF	ON	ADDRESS 36
ADDRESS 5	ON	OFF	ON	OFF	OFF	OFF	OFF	OFF	OFF	ON	OFF	ON	ADDRESS 37
ADDRESS 6	OFF	ON	ON	OFF	OFF	OFF	OFF	OFF	ON	ON	OFF	ON	ADDRESS 38
ADDRESS 7	ON	ON	ON	OFF	OFF	OFF	OFF	OFF	ON	ON	OFF	ON	ADDRESS 39
ADDRESS 8	OFF	OFF	OFF	ON	OFF	OFF	OFF	OFF	OFF	OFF	ON	ON	ADDRESS 40
ADDRESS 9	ON	OFF	OFF	ON	OFF	OFF	OFF	OFF	ON	OFF	OFF	ON	ADDRESS 41
ADDRESS 10	OFF	ON	OFF	ON	OFF	OFF	OFF	OFF	OFF	ON	OFF	ON	ADDRESS 42
ADDRESS 11	ON	ON	OFF	ON	OFF	OFF	OFF	OFF	ON	ON	OFF	ON	ADDRESS 43
ADDRESS 12	OFF	OFF	ON	ON	OFF	OFF	OFF	OFF	OFF	OFF	ON	ON	ADDRESS 44
ADDRESS 13	ON	OFF	ON	ON	OFF	OFF	OFF	OFF	ON	OFF	ON	ON	ADDRESS 45
ADDRESS 14	OFF	ON	ON	ON	OFF	OFF	OFF	OFF	OFF	ON	ON	ON	ADDRESS 46
ADDRESS 15	ON	ON	ON	ON	OFF	OFF	OFF	OFF	ON	ON	ON	ON	ADDRESS 47
ADDRESS 16	OFF	OFF	OFF	OFF	ON	OFF	OFF	OFF	OFF	OFF	ON	ON	ADDRESS 48
ADDRESS 17	ON	OFF	OFF	OFF	ON	OFF	OFF	OFF	ON	OFF	ON	ON	ADDRESS 49
ADDRESS 18	OFF	ON	OFF	OFF	ON	OFF	OFF	OFF	OFF	ON	ON	ON	ADDRESS 50
ADDRESS 19	ON	ON	OFF	OFF	ON	OFF	OFF	OFF	ON	ON	ON	ON	ADDRESS 51
ADDRESS 20	OFF	OFF	ON	OFF	ON	OFF	OFF	OFF	OFF	OFF	ON	ON	ADDRESS 52
ADDRESS 21	ON	OFF	ON	OFF	ON	OFF	OFF	OFF	ON	OFF	ON	ON	ADDRESS 53
ADDRESS 22	OFF	ON	ON	OFF	ON	OFF	OFF	OFF	OFF	ON	ON	ON	ADDRESS 54
ADDRESS 23	ON	ON	ON	OFF	ON	OFF	OFF	OFF	ON	ON	ON	ON	ADDRESS 55
ADDRESS 24	OFF	OFF	OFF	ON	ON	OFF	OFF	OFF	OFF	OFF	ON	ON	ADDRESS 56
ADDRESS 25	ON	OFF	OFF	ON	ON	OFF	OFF	OFF	ON	ON	ON	ON	ADDRESS 57
ADDRESS 26	OFF	ON	OFF	ON	ON	OFF	OFF	OFF	OFF	ON	ON	ON	ADDRESS 58
ADDRESS 27	ON	ON	OFF	ON	ON	OFF	OFF	OFF	ON	ON	ON	ON	ADDRESS 59
ADDRESS 28	OFF	OFF	ON	ON	ON	OFF	OFF	OFF	OFF	ON	ON	ON	ADDRESS 60
ADDRESS 29	ON	OFF	ON	ON	ON	OFF	OFF	OFF	ON	ON	ON	ON	ADDRESS 61
ADDRESS 30	OFF	ON	ON	ON	ON	OFF	OFF	OFF	OFF	ON	ON	ON	ADDRESS 62
ADDRESS 31	ON	ON	ON	ON	ON	OFF	OFF	OFF	OFF	ON	ON	ON	ADDRESS 63

S1-DS7	S1-DS8	BIT #
0	0	1
1	0	2
0	1	3
1	1	4



S2-DS1	S2-DS8	FUNCTION
1	0	SELF-TEST MODE
0	0	GONG USES BIT 1 UP (SINGLE) AND BIT 2 DOWN (DOUBLE)
0	1	GONG USES BIT 3 UP AND BIT 4 DOWN (BOTH SINGLE)
1	1	ECA MODE - GONG USES BIT 3 UP AND BIT 4 DOWN (BOTH SINGLE)

CODE VERSION _____

BOARD VERSION CE3444 _____

----- = DIP SWITCH 8 OFF
 _____ = DIP SWITCH 8 ON
 - - - - - = DIP SWITCH 1 AND 8 ON

DATE DRAWN: 03/25/10	DRAWN BY: DAC	REQUESTED BY: SR	C.E. ELECTRONICS, INC. 2107 Industrial Drive Bryan, Ohio 43306 (419) 636-6705
BOARD NUMBER: 3444	LAST DATE REVISED: -	APPROVED BY:	
PRODUCT BOX DISPLAY WITH OTIS SERIAL INPUT		DWG. NO. OBOX_01	

The following Otis data must be furnished at the specified address for the Otis Serial Indicator to work properly. The address is selected by setting DIP switches 2-7 as shown on the back of this page. The board reads the address determined by the DIP switch setting. For example, if the DIP switch is set to address 50, the board will read the bits at address 50.

At DIP switch address—selected by the DIP switch on the unit (Default 50):

Normal Operation

DIP switch 1 puts the unit in self-test mode.

DIP switch 1 and DIP switch 8 *OFF*:

- Bit 1—Up Gong (Single)
- Bit 2—Down Gong (Double)
- Bit 3—Up Arrival Arrow/Lantern
- Bit 4—Down Arrival Arrow/Lantern

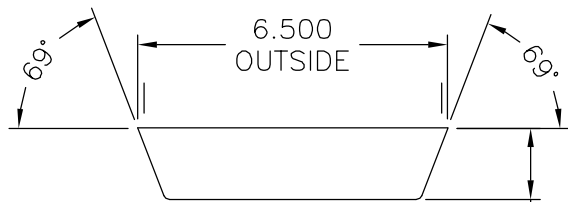
DIP switch 1 *OFF* and DIP switch 8 *ON*:

- Bit 1—Not Used
- Bit 2—Not Used
- Bit 3—Up Arrival Arrow/Lantern and Up Gong (Single)
- Bit 4—Down Arrival Arrow/Lantern and Down Gong (Single)

ECA Operation

DIP switches 1 and 8 *ON* puts the unit in ECA Mode:

- Bit 1—ECA Tone
- Bit 2—Play Gong
- Bit 3—Up Arrival Arrow/Lantern (Single Gong)
- Bit 4—Down Arrival Arrow/Lantern (Double Gong)



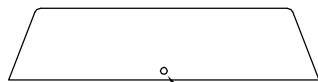
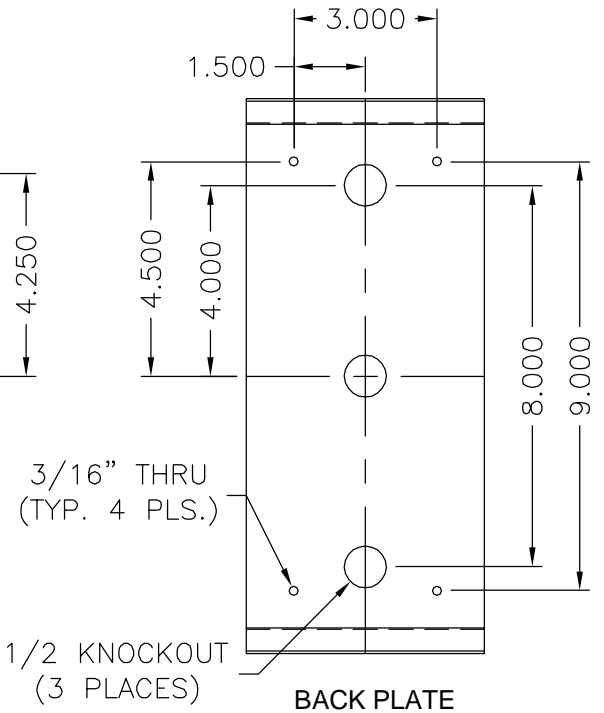
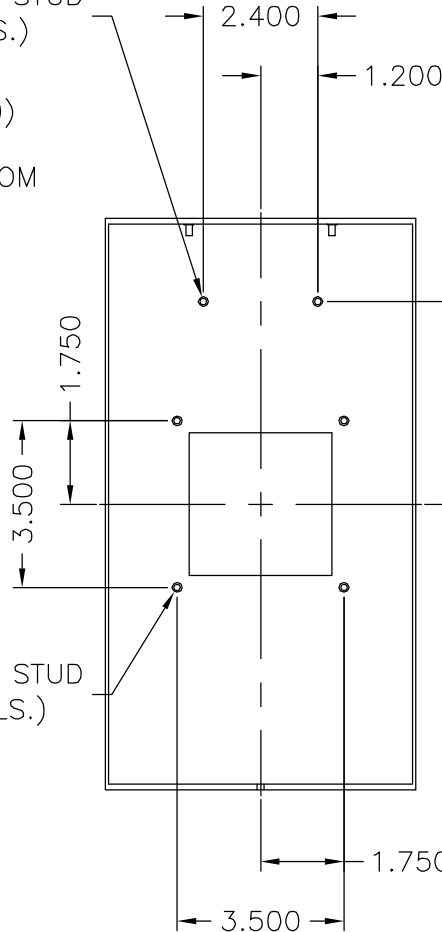
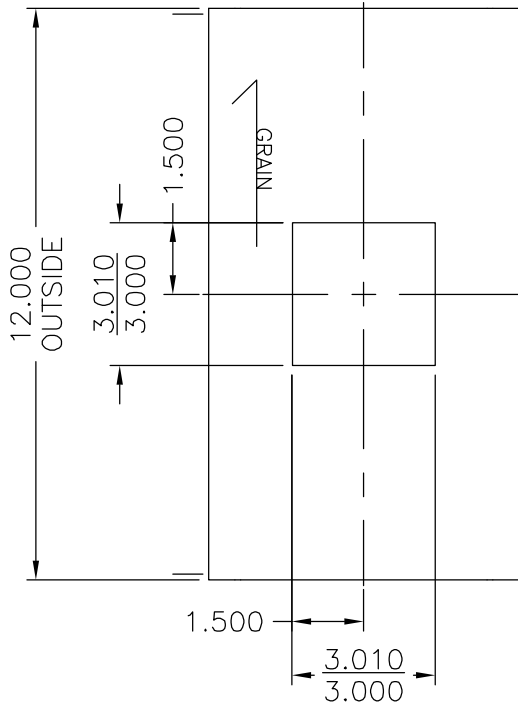
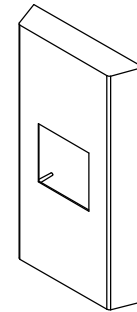
#6-32 x 1/2" STUD
(TYP. 2 PLS.)

10 GA. (.120)
END PLATE
TOP & BOTTOM

16 GA. (.060)
CHASSIS

#6-32 X 1" STUD
(TYP. 4 PLS.)

#6-32 SET SCREW



MATERIAL: STAINLESS STEEL - NOTED
FINISH: #4 BRUSHED - VERTICAL GRAIN
NOTE: BACK PLATE INCLUDED

LENS NUMBER:	BOARD # & REV:
APPROVED BY:	
Signature: _____	
Date: _____	
Company: _____	

DATE DRAWN: 6/10/09	LAST DATE REVISED	SCALE NONE	PART #:
DRAWN BY: D.W.S.	TOLERANCE UNLESS OTHERWISE SPECIFIED: +0.015, -0.015	 C.E. ELECTRONICS, INC. 2107 Industrial Drive Bryan, Ohio 43506 (419) 636-6705	
REQUESTED BY: R.T.	TOLERANCE FOR CUTOFF (WINDOW):		
TITLE: C.E. BOX FIXTURE		DWG. NO. 70100140	REV: