

DISCRETE INPUT MSV20 / MSV40

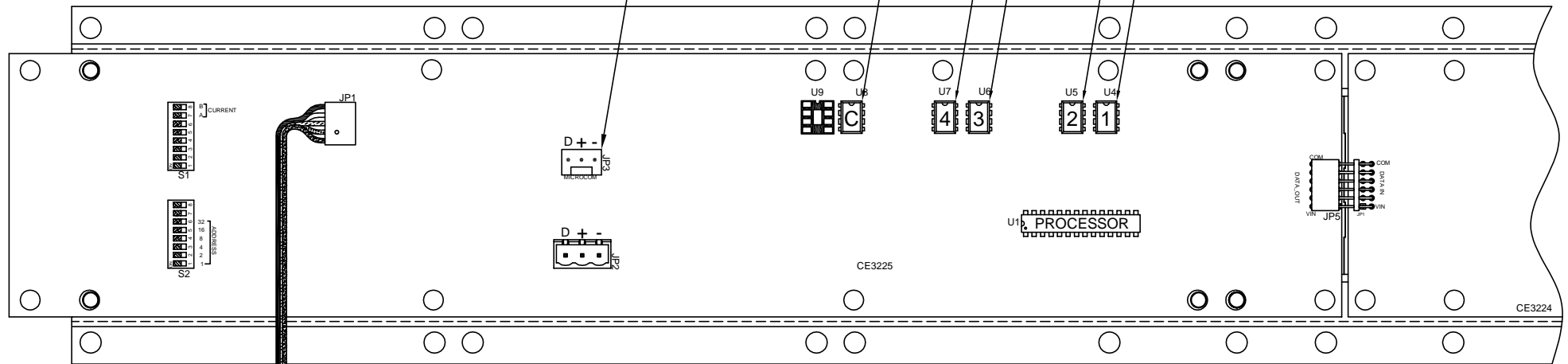
JOB# _____

AS VIEWED FROM BACK

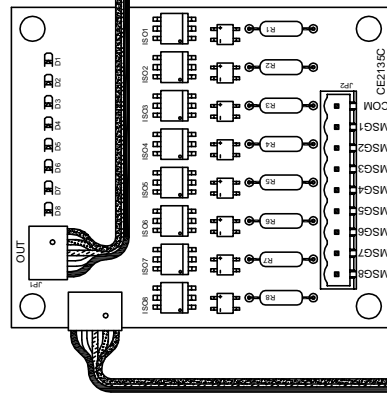
CONNECT 24 - 30 VDC TO + AND - PINS OF JP2 OR JP3

COMPETITOR SERIES EEPROM

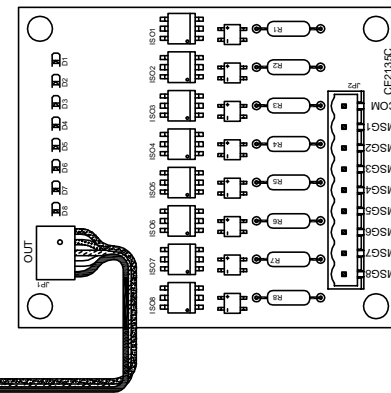
MESSAGE CENTER EEPROMS



NOTE: CE3224 BOARD IS NOT USED FOR MSV40 DISPLAYS.



- COM _____
- MSG1 _____
- MSG2 _____
- MSG3 _____
- MSG4 _____
- MSG5 _____
- MSG6 _____
- MSG7 _____
- MSG8 _____

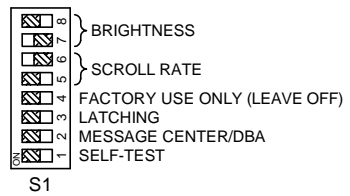


- COM _____
- MSG9 _____
- MSG10 _____
- MSG11 _____
- MSG12 _____
- MSG13 _____
- MSG14 _____
- MSG15 _____
- MSG16 _____

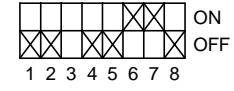
CODE VERSION _____

BOARD VERSION CE3225 _____

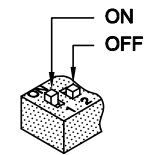
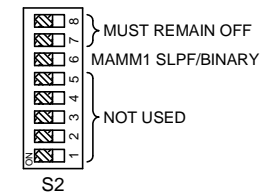
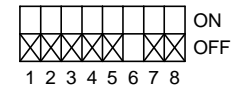
BOARD VERSION CE3224 _____



S1 DEFAULT SETTINGS



S2 DEFAULT SETTINGS



DATE DRAWN: 09/24/10	DRAWN BY: DAC	REQUESTED BY: DAC	 C.E. ELECTRONICS, INC. 2107 Industrial Drive Bryan, Ohio 43306 (419) 636-6705
BOARD NUMBER: 3225, 3224	LAST DATE REVISED: -	APPROVED BY:	
PRODUCT: DISCRETE INPUT MSV20/MSV40 SCROLLING DISPLAY	EWG. NO. MSV20_02	REV: -	

**CE3225 SCROLLING DISPLAY
with Discrete Inputs**

DIP SWITCH FUNCTIONS

DIP SWITCH S1

DS1 – TEST MODE – Scrolls through the messages programmed into the EEPROMS.

DS2 – MESSAGE CENTER/DBA – Must be *OFF* for proper operation of the scrolling display.

DS3 – LATCHING – When DS3 is *OFF*, messages only display as long as a signal is present. When DS3 is *ON*, messages stay on the display until the next message signal is received.

DS4 – FACTORY USE ONLY – Must remain *OFF* for proper operation of the scrolling display.

DS5 & DS6 – SCROLL RATE – Determines how fast messages scroll across the display in four steps: Slow (both switches *OFF*) to Fast (both switches *ON*). Factory default is DS6 *ON*.

DS7 & DS8 – BRIGHTNESS – Determines the brightness level of the display in four steps: Dim (both switches *OFF*) to Bright (both switches *ON*). Factory default is DS7 *ON*.

DIP SWITCH S2

DS1-DS5 – Not used for discrete input units

DS6 – MAMM1 SLPF/BINARY – When DS6 is *OFF*, the MAMM1 Message Module inputs are read as one line per message. When DS6 is *ON*, the MAMM1 inputs are read in binary format.

DS7 & DS8 – Both *OFF* – Up to 16 “One Input per Message” or 63 binary-input messages are displayed. Message “0” can be used if the messages are not latched (S1, DS3 is turned off).