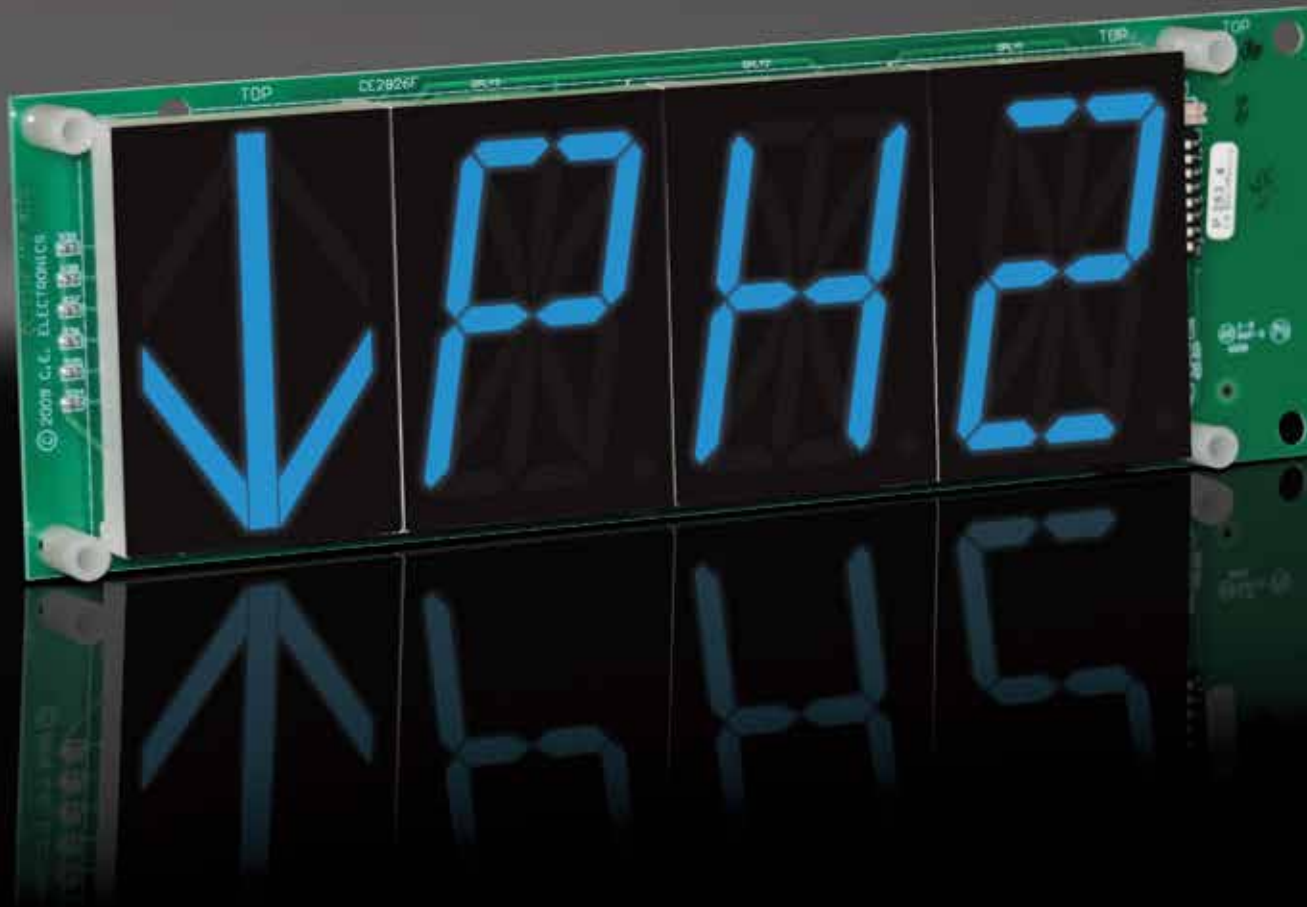




MH422-XXX

REMOTE DISPLAY INDICATOR "RDI"



MICRO COMM

REMOTE DISPLAY INDICATOR "RDI"

Segmented LED, digital indicator for floor position display, as well as car direction. Any alphanumeric character can be displayed up to three digits of floor designations.

TYPICAL APPLICATIONS:

- > Car-OP Panel
- > Transom-car or Hall

FEATURES:

- > Latched inputs
- > Cross wire protected
- > Self Testing
- > Alternate Message
- > Passing Chime Output
- > Error Detection and Correction Feature



C.E. Electronics, Inc. (US) 2107 Industrial Drive, Bryan, Ohio 43506 p: 419.636.6705 www.creelectronics.com

C.E. Electronics, Ltd. (UK) P.O. Box 1679 Marlow, Bucks SL7 3ZG, UK p: +44 (0) 1628 487633 www.creelectronics.co.uk

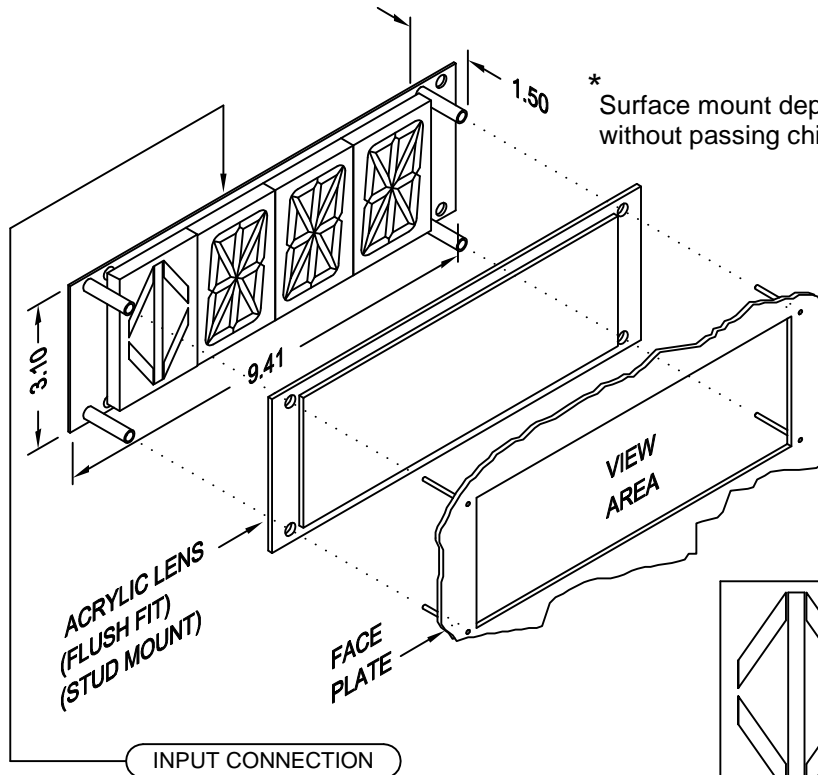


C.E. Electronics, Inc.
 2107 Industrial Drive
 Bryan, OH 43506
 PH (419) 636-6705 FX (419) 636-2516
 www.ceelectronics.com

MH422-XXX

Ver. 6 Rel. 10/26/2016

MICRO COMM[®]
 DISPLAYS



* Surface mount depth of 1 INCH available without passing chime option.

RENEWAL PARTS

- Lens: 104-5614 RED
- Lens: 104-6094 GRAY
- Lens: 104-9094 BLUE

REMOTE DISPLAY INDICATOR "RDI"

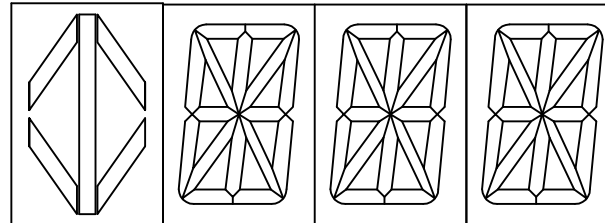
Segmented LED, digital indicator for floor position display, as well as car direction. Any alphanumeric character can be displayed up to three digits of floor designations.

Typical Applications:

- Car-OP Panel
- Transom-car or Hall

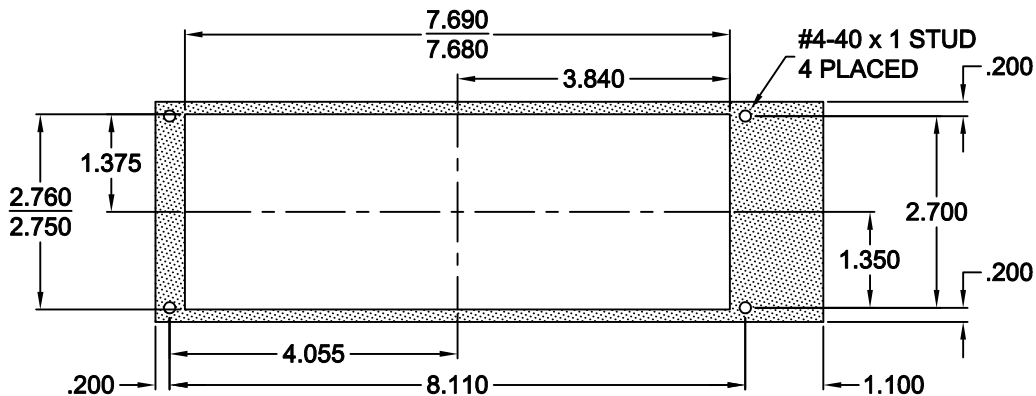
Features:

- Latched inputs
- Cross wire protected
- Self testing
- Alternate message
- Passing chime output
- Error detection and correction feature



2.2 INCH CHARACTERS
 2.5 INCH ARROW

PANEL PREPARATION



TO ORDER - SPECIFY MH422 - X X X

COLOR:

- "RR" = RED CHARACTER, RED ARROW
- "GR" = GREEN CHARACTER, RED ARROW
- "GG" = GREEN CHARACTER, GREEN ARROW
- "RG" = RED CHARACTER, GREEN ARROW
- "BB" = BLUE CHARACTER, BLUE ARROW
- "WW" = WHITE CHARACTER, WHITE ARROW

LENS:

- "R" = RED
- "G" = GRAY
- "B" = BLUE
- "X" = NO LENS

NOTE:

1. This is not a stand alone unit. Must be used in conjunction with a Micro Comm interface.