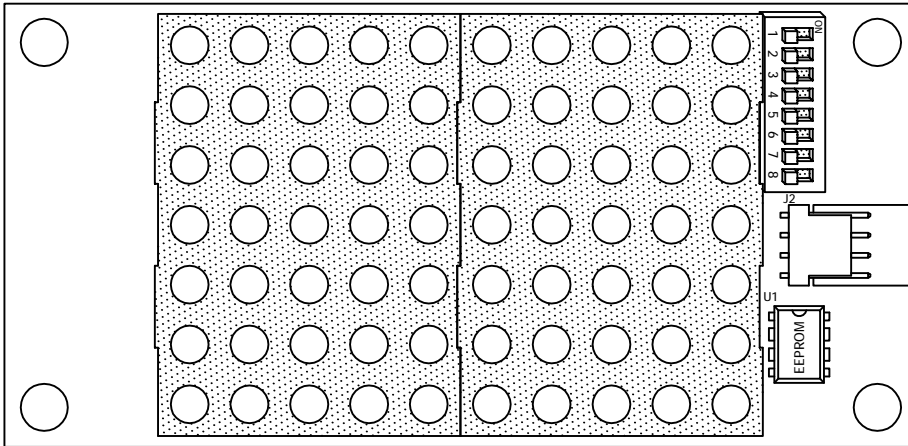
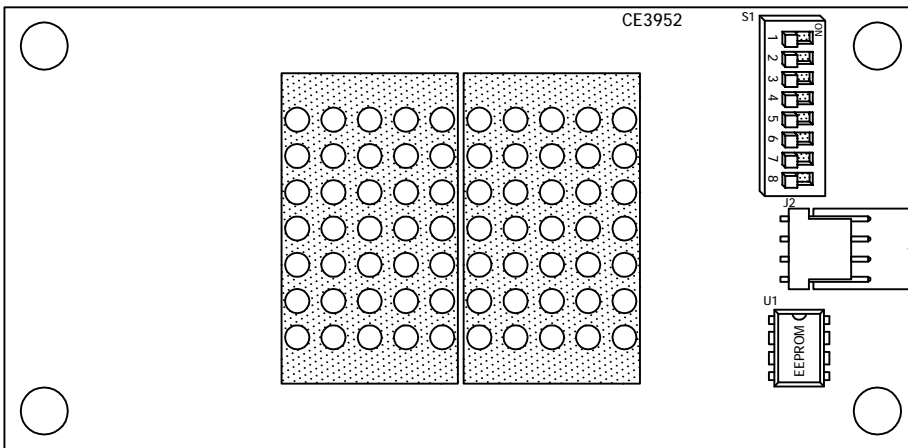
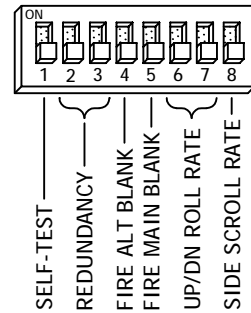
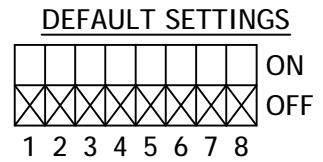


# DM210/DM220 LED DOT MATRIX DISPLAY

JOB# \_\_\_\_\_

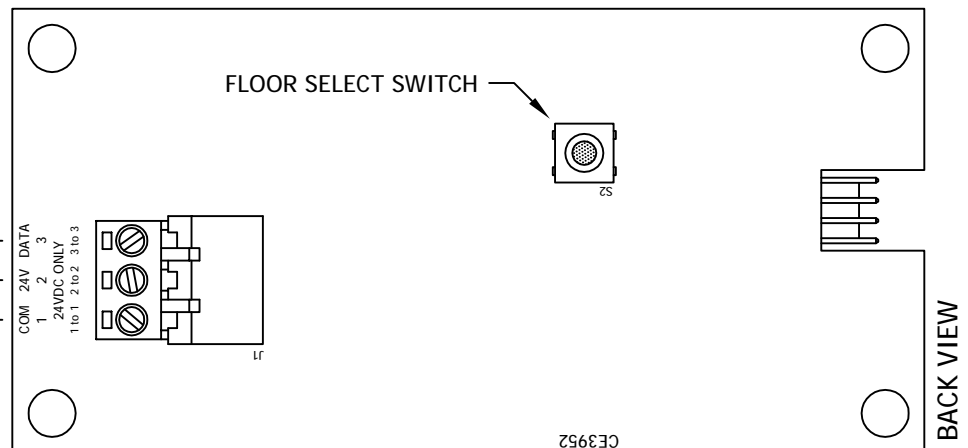


DM220-XX




DM210-XX

**S2 FLOOR SELECT SWITCH - SETS THE DISPLAY TO SHOW AN ARRIVAL ARROW WHEN THE CAR IS AT A SPECIFIC FLOOR. TO SET THE UNIT FOR ARRIVAL MODE, POSITION THE CAR AT THE DESIRED FLOOR OR TURN ON SELF-TEST. WHEN THE DISPLAY SHOWS THE DESIRED FLOOR, PRESS AND HOLD S2 UNTIL THE FLOOR POSITION CHANGES TO AN ARROW. TO RETURN TO NORMAL OPERATION, PRESS AND HOLD S2 UNTIL THE ARROW CHANGES TO THE FLOOR POSITION.**



CODE VERSION \_\_\_\_\_

BOARD VERSION CE3952 \_\_\_\_

DATE DRAWN: 06/18/19	DRAWN BY: DAC	REQUESTED BY: SR	 C.E. ELECTRONICS, INC. 2107 Industrial Drive Bryan, OH 43306 (419) 636-6705
BOARD NUMBER: 3952	LAST DATE REVISED: -	APPROVED BY:	
PRODUCT 1" or 2" LED DOT MATRIX DISPLAY		DWG. NO. DM2XX_01	REV: -