

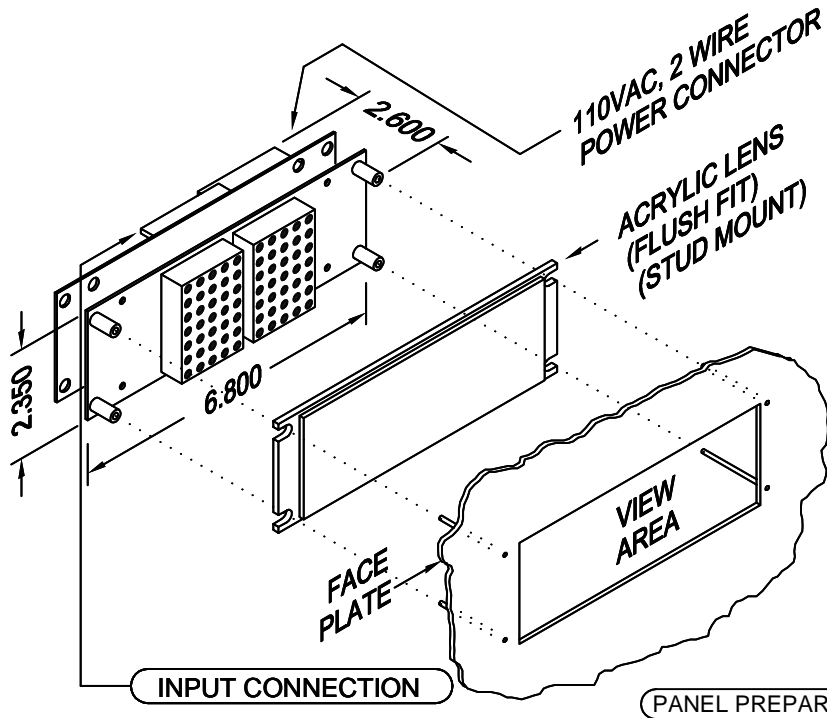


C.E. Electronics, Inc.
 2107 Industrial Drive
 Bryan, OH 43506
 PH (419) 636-6705 FX (419) 636-2516
 www.cееlectronics.com

DH220-XXXXX

Ver. 8 Rel. 11/21/2016

COMPETITOR
 DOT MATRIX



RENEWAL PARTS

- Lens: 104-5575 RED
- Lens: 104-6075 GRAY
- Lens: 104-9075 BLUE

DOT MATRIX LED DIGITAL INDICATOR

Dot matrix LED digital indicator for floor position display, as well as car direction, if desired. Any alphanumeric or custom character can be displayed in either single digit with arrow or double digit floor designations.

Typical Applications

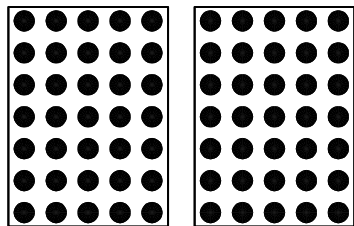
- Car-OP Panel
- Transom-car or Hall

Features

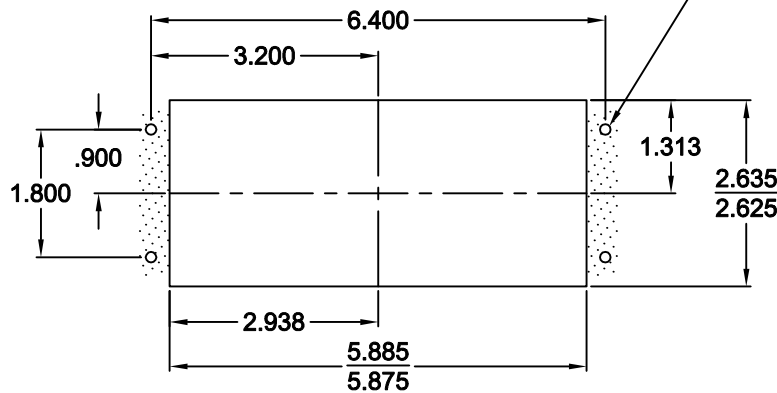
- Low cost design
- Self contained unit
- Latched input
- Self testing
- Scrolling
- Passing chime output
- Error detection and correction feature
- UL listed

8' CABLE SUPPLIED WITH PLUG-IN CONNECTOR SUPPLIED

#4-40 x 1-3/4 STUD
 4 PLACES



2" CHARACTERS



TO ORDER:-SPECIFY DH220 - X X X X X

COLOR:
 "0" = MIXED
 "R" = RED
 "A" = AMBER
 "G" = GREEN
 "B" = BLUE *
 "W" = WHITE

LENS:
 "R" = RED
 "G" = GRAY
 "B" = BLUE
 "X" = NO LENS

NUMBER OF INPUTS:
 "0" = 16 INPUT OR LESS
 "1" = 31 INPUT
 "M" = MICRO COMM*

SIGNAL FORMAT:
 "1" = SINGLE LINE/FLOOR
 "2" = BINARY
 "3" = UNITS & TENS
 "4" = GRAY CODE
 "5" = INVERTED BINARY
 "6" = SPECIAL
 "X" = IF MICRO COMM

SIGNAL VOLTAGE:
 "A" = POSITIVE 6-20VDC, 6-24VAC
 "B" = POSITIVE 24-48VDC, 24-48VAC
 "C" = 120VAC
 "D" = POSITIVE 125VDC
 "E" = NEGATIVE 6-20VDC
 "F" = NEGATIVE 24-48VDC
 "G" = NEGATIVE 125VDC
 "X" = IF MICRO COMM

NOTE:

1. If a special voltage is required, please consult factory.
2. *110VAC not required for power supply on Micro Comm units and is not a stand alone unit.
 Must be use in conjunction with a Micro Comm interface.
3. *Blue can not be mixed with other colors